

Item	Caixa Caja Box	Qtd Ctd Qty	Descrição Descripción Description	Medidas (mm) Dimensiones (mm) Size (measurements) (mm)
01	2/5	01	Rodapé Frontal frente pie de página Front Footer	2515x73x15
02	2/5	03	Travessa do rodapé Carril pie Baseboard crosspiece	464x73x15
03	2/5	01	Rodapé Traseiro Pie de página traseira Rear Footer	2515x73x15
04	2/5	01	Base Base Base	2515x500x15
05	1/5	01	Lateral esquerda Lateral izquierda Left side	2220x500x15
06	1/5	01	Divisão Inferior Esquerda División inferior izquierda Bottom Left Division	677x408x15
07	3/5	01	Divisão Superior Esquerda División superior izquierda Upper Left Division	1075x350x15
08=14	1/5	01	Tampo das Gavetas Tapa del cajón Drawer Top	741x410x15
09=16	3/5	02	Prateleira Estante Shelf	725x350x15
10	3/5	01	Divisão Central División central Central Division	802x348x15
11	3/5	01	Prateleira Menor Estante menor Minor shelf	503x350x15
12	1/5	01	Divisão Inferior Direita División inferior derecha Lower Right Division	677x408x15
13	3/5	01	Divisão Superior Direita División superior derecha Upper Right Division	1075x350x15
14=08	1/5	01	Tampo das Gavetas Tapa del cajón Drawer Top	741x410x15
15	1/5	01	Lateral Direita Lado derecho Right side	2220x500x15
16=09	3/5	02	Prateleira Estante Shelf	725x350x15
17	2/5	01	Chão do maleiro Piso del portaequipajes Floor of the closet top shelf	2515x410x15
18	2/5	02	Ripa do maleiro Portaequipajes de ripa Lath of the closet top shelf	350x73x15
19	2/5	01	Tampo Tapa Top	2569x520x15
20	2/5	01	Moldura frontal Cornija frontal Front frame	2599x80x25
21	2/5	01	Chapéu Sombrero Hat	2515x75x15
22	2/5	02	Moldura Lateral Marco lateral Lateral Frame	452x80x25
23	2/5	01	Fundo Superior Fondo Superior Top Bottom	2539x372x3
24	3/5	02	Fundo Central Fondo central Central Fund	1789x524x3
25	3/5	04	Fundo Fondo Bottom	1789x371x3
26	4/5	02	Painel Central Panel central Center pane	1245x526x12
27	4/5	02	Painel Inferior Superior Panel Inferior Superior Top Bottom Panel	1245x526x12
28	4/5	04	Painel espelho Panel espejo Mirror Panel	1245x526x12
29	5/5	04	Espelho Espejo Mirror	1225x520x3
30	1/5	04	Frente de gaveta Frente de cajón Front of drawer	717x220x15
31	1/5	08	Lado de gaveta Lado del cajón Side of drawer	350x180x15
32	3/5	04	Fundo de gaveta recortado Fondo de cajón recortado Drawer bottom trimmed	681x361x3
33	1/5	04	Ripa de trás Malla detrás Rear lath	700x180x15



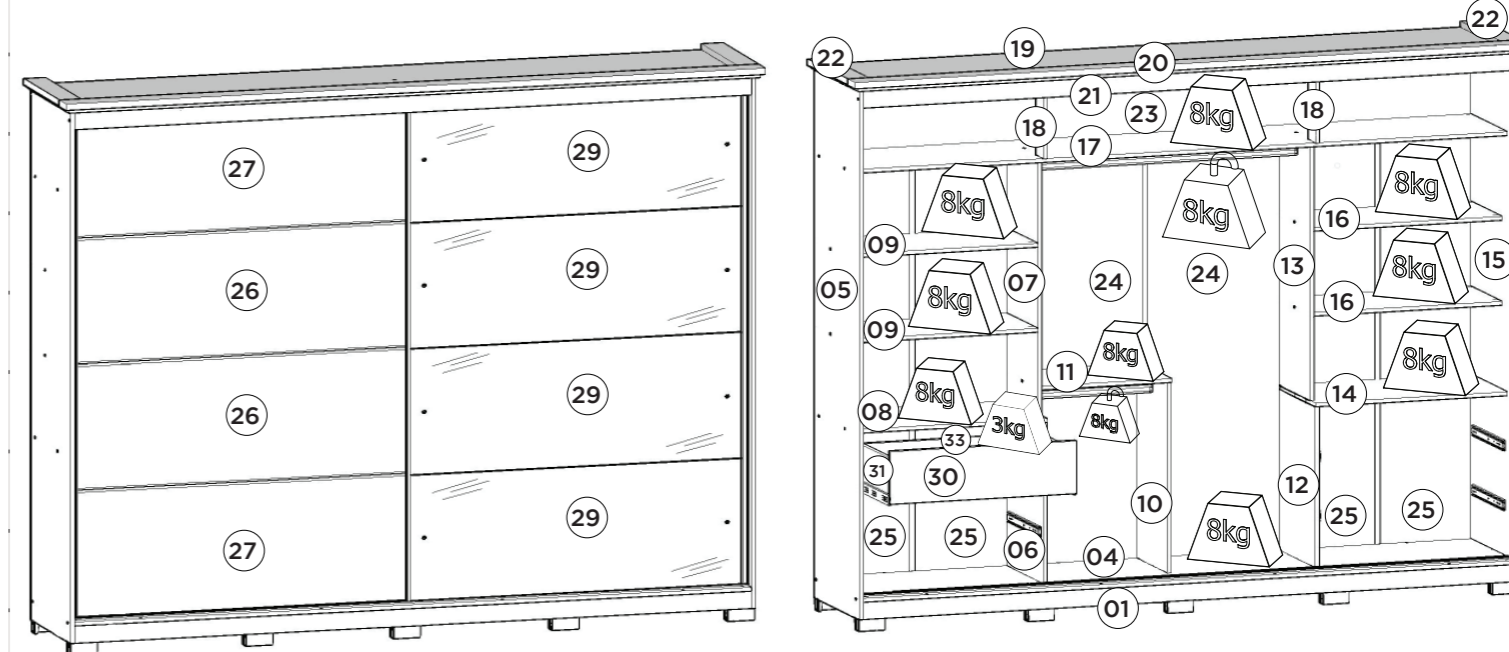
Ind. e Com. de Móveis Henn
Mondai - SC - Brasil
+55 49 3674.3500
@moveishenn
www.henn.com.br

INSTRUÇÕES DE MONTAGEM

INSTRUCCIONES DE MONTAJE
ASSEMBLY INSTRUCTIONS

ROUPEIRO MELLINI 02 PORTAS DESLIZANTES
ARMARIO MELLINI 02 PUERTAS DESLIZANTES | MELLINI 02 WARDROBE SLIDING DOORS

D266-129 OFF White/Nature
D266-130 Castanho HP



Pesos máximos recomendados com carga distribuída
Peso máximo recomendado con la carga distribuida
Recommended maximum weights with evenly distributed.

AVISO

Para limpeza de seu móvel, use uma flanela seca ou umedecida, e não utilize produtos químicos que possam danificar seu produto.

SISTEMA DE MONTAGEM

O sistema de montagem dos produtos, funciona de acordo com a ordem crescente dos números indicados no desenho. Ex: 01, 02, 03, 04... até a conclusão da montagem.

ADVERTENCIA

Para limpieza de su móvil, use una flanela seca o húmeda, y no utilice productos químicos que puedan dañar su producto.

SISTEMA DE MONTAJE

El sistema de montaje de los productos funciona de acuerdo con el orden creciente de los números indicados en el dibujo. Ej.: 01, 02, 03, 04... hasta la conclusión del montaje.

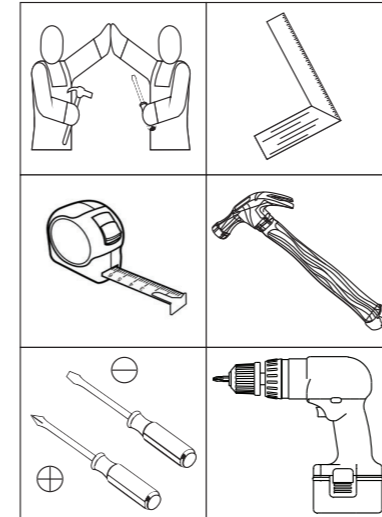
NOTICE

To clean your furniture, use a dry or wet cloth, and do not use chemicals that may damage your product.

ASSEMBLY SYSTEM

The products' assembly system works according to the increasing order of the indicated numbers. For example: 01, 02, 03, 04 ... to the end of the assembly.

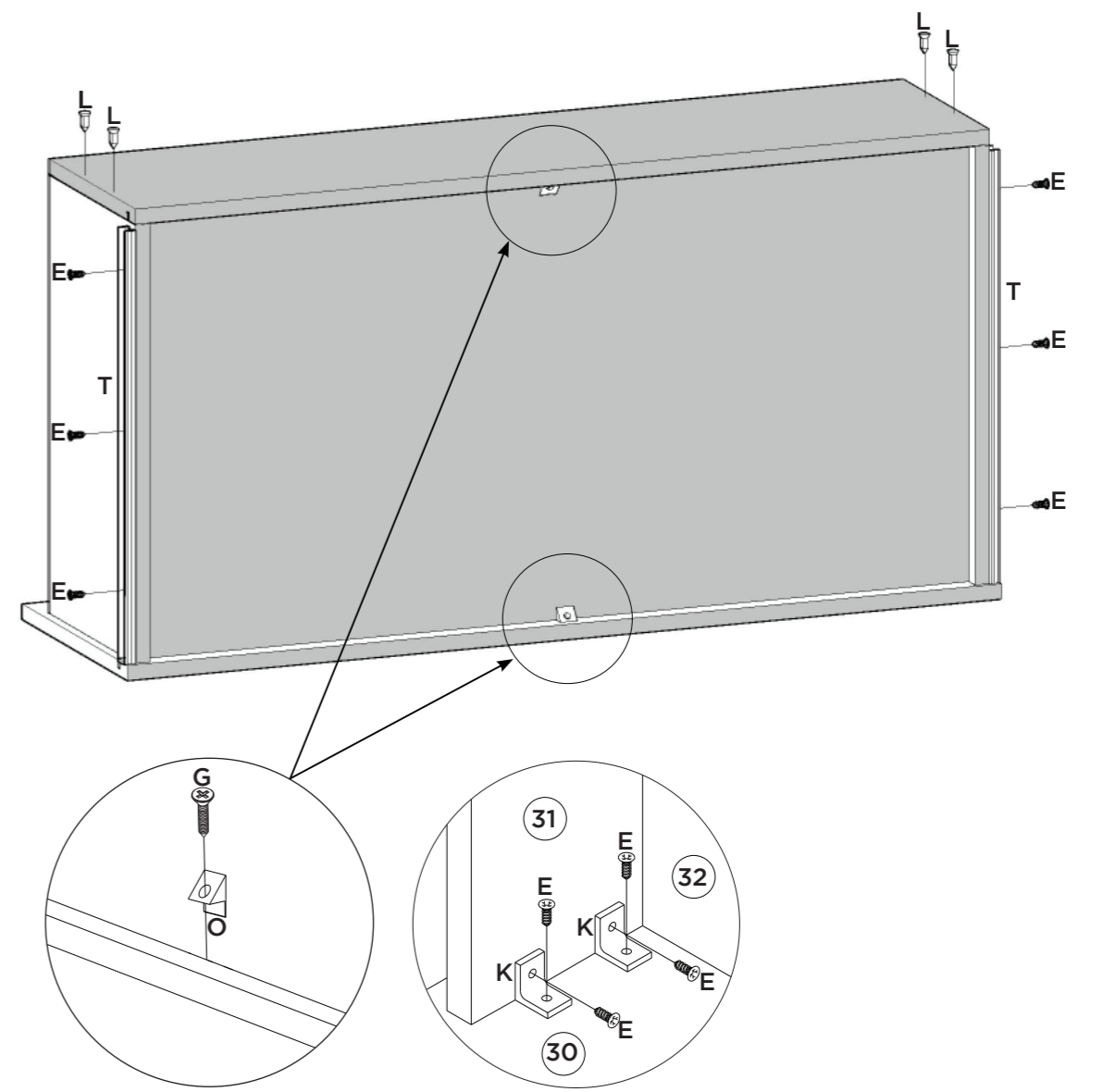
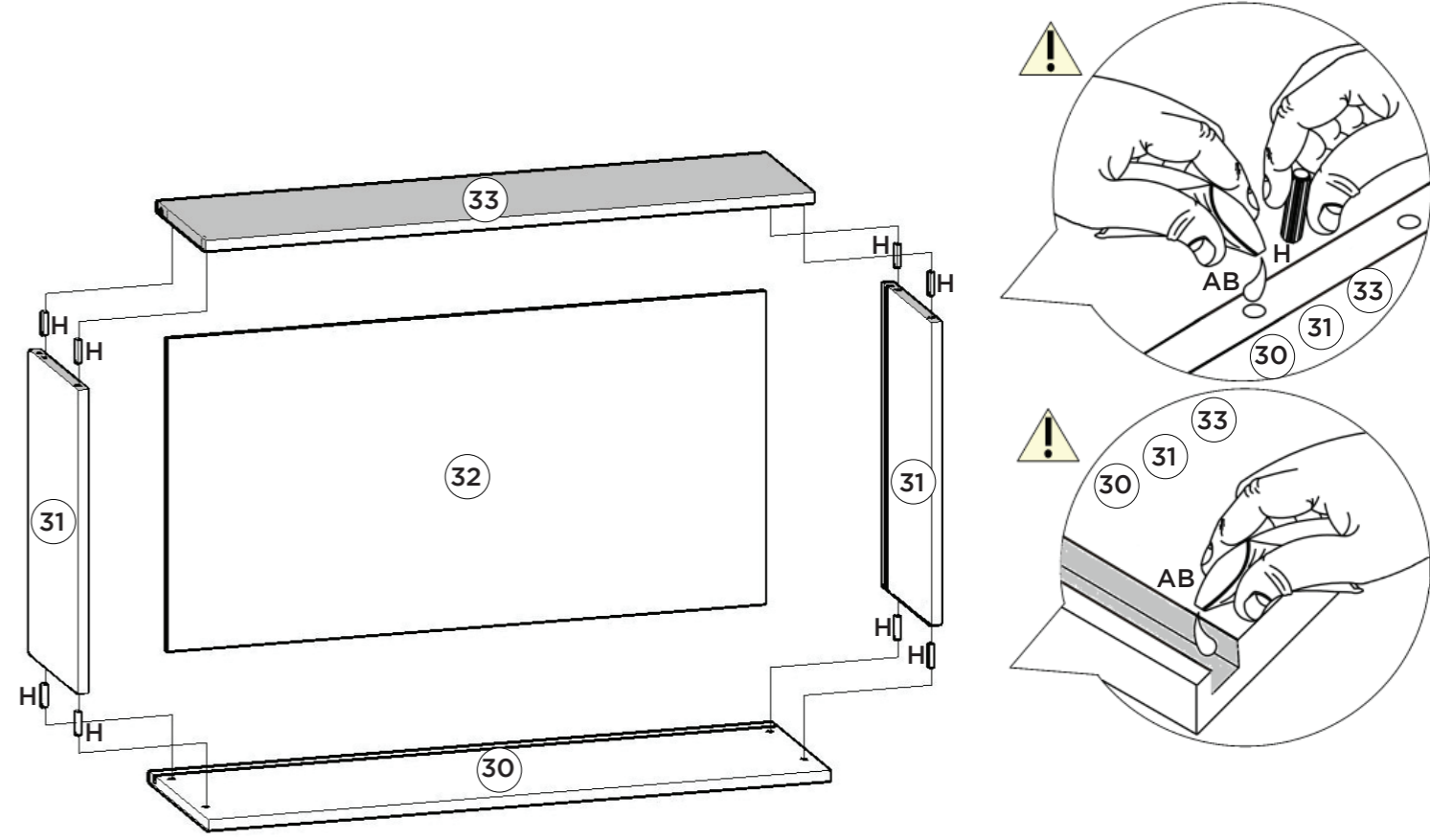
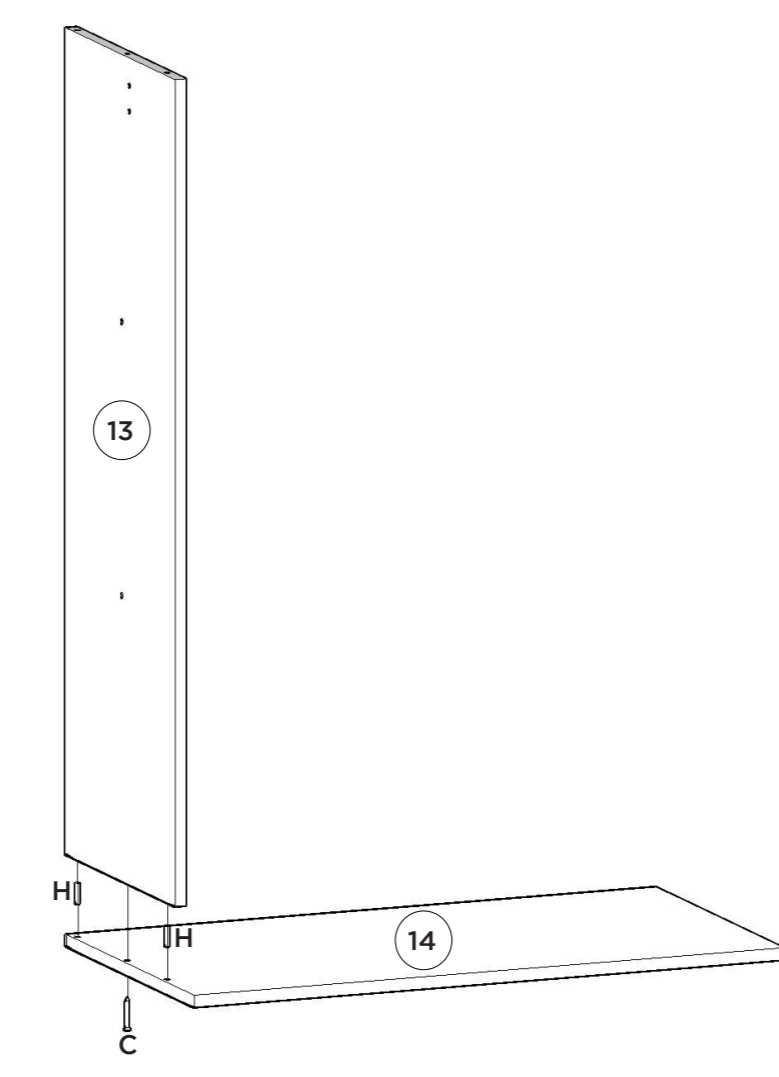
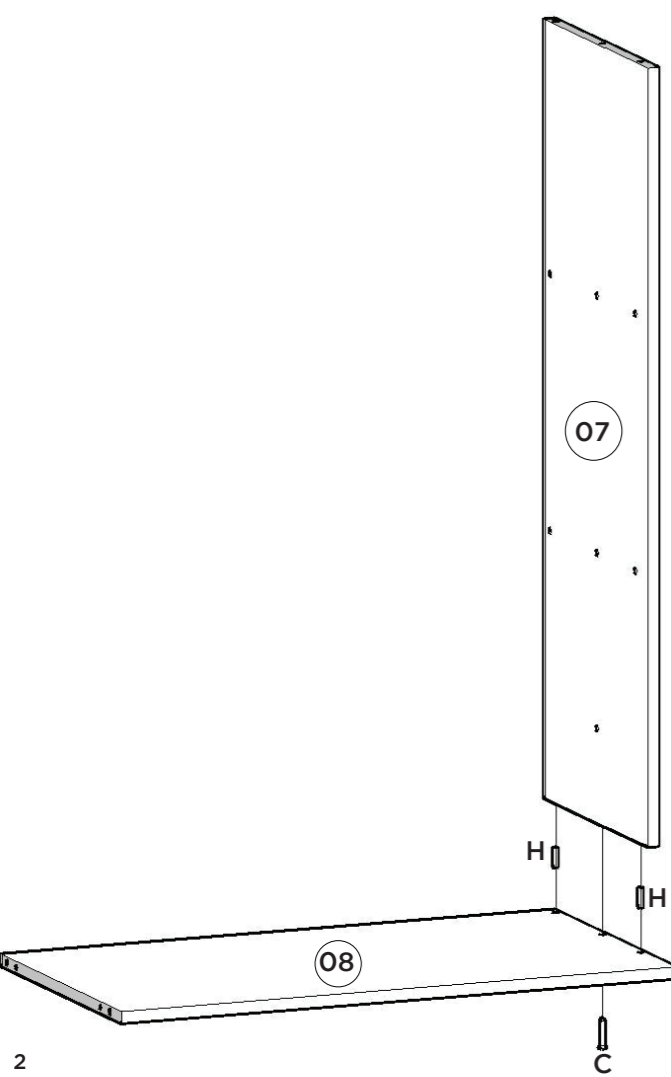
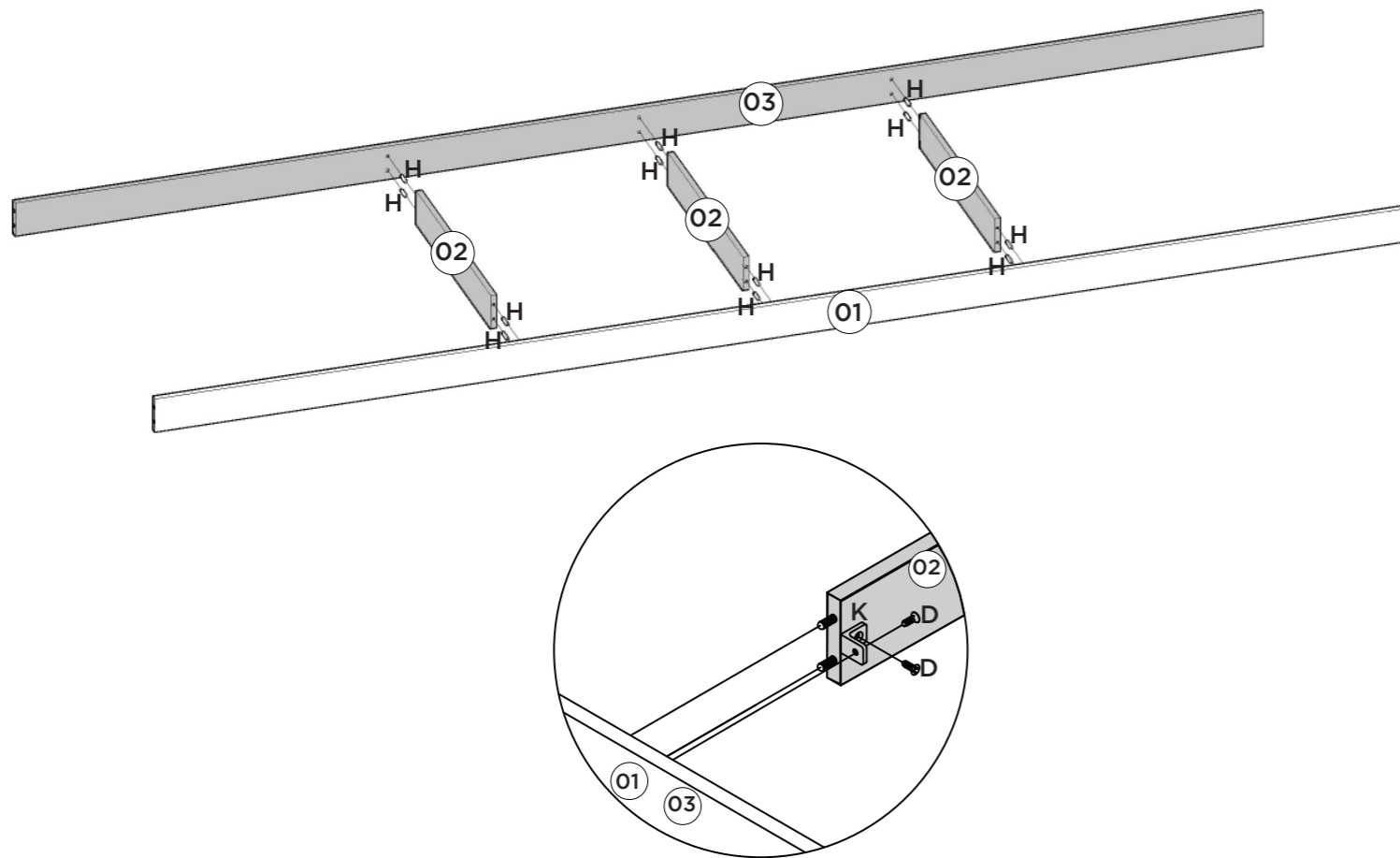
Requisitos para montagem
Requisitor para la montaje
Assembly Requirements



Imagens meramente ilustrativas
Imágenes meramente ilustrativas
Images for illustration only

Ferragens | Herrajes | Hardware

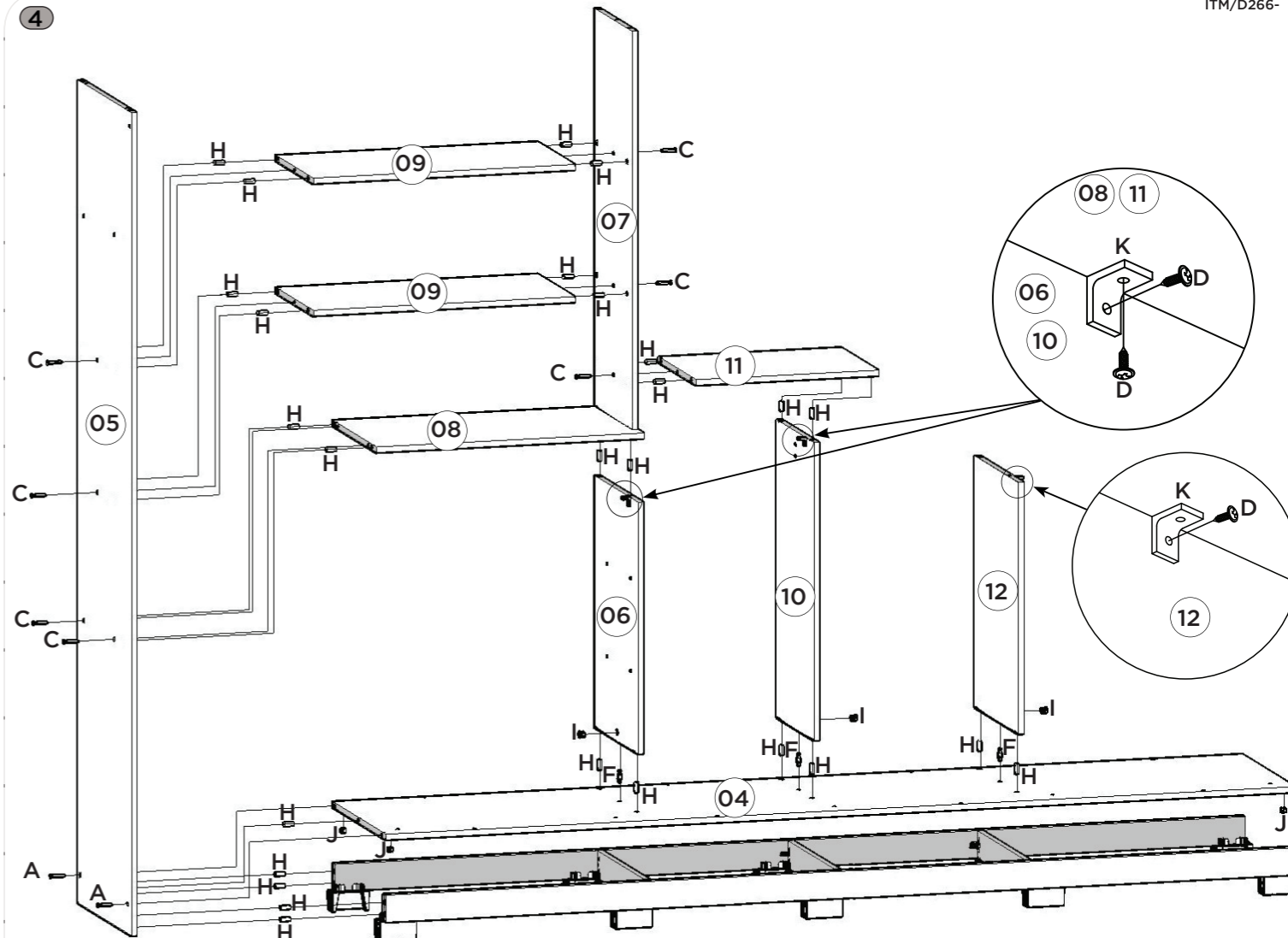
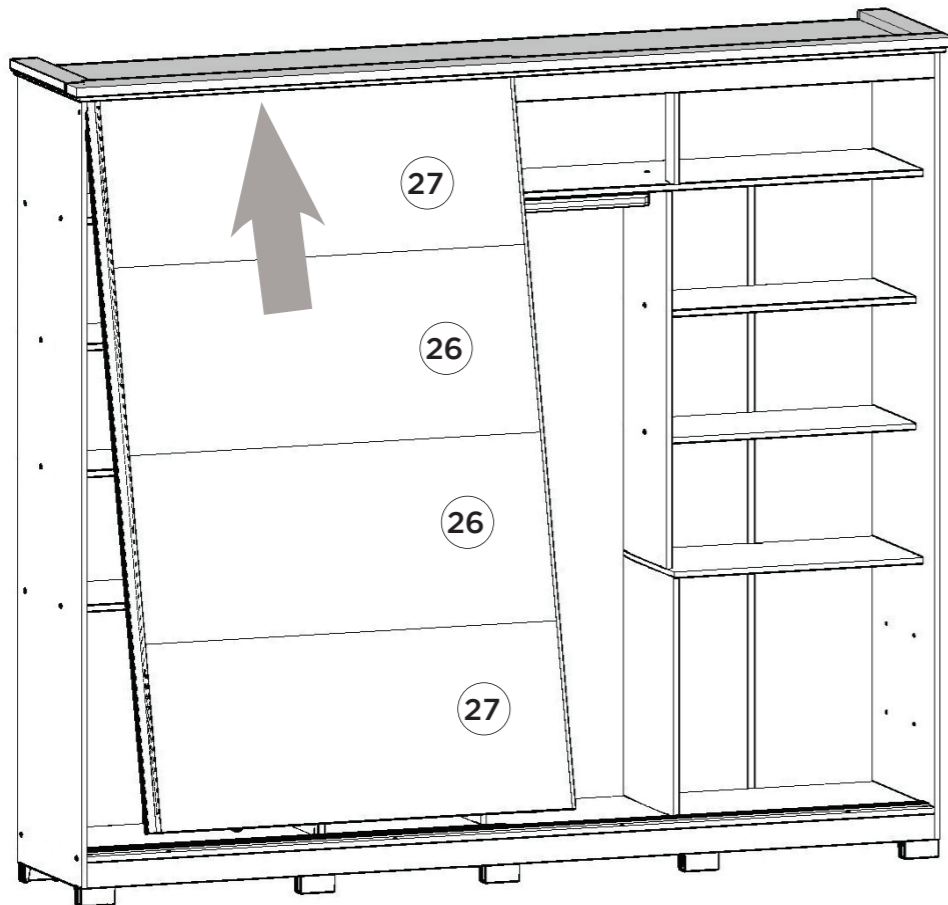
A 04x	B 10x	C 39x	D 48x	E 151x	F 07x	G 20x
Parafuso 4,5x50mm CHT. Tornillo 4,5x50mm CHT. Screw 4,5x50mm CHT.	Parafuso 4,0x35mm CHT. Tornillo 4,0x35mm CHT. Screw 4,0x35mm CHT.	Parafuso 3,5x40mm CHT. Tornillo 3,5x40mm CHT. Screw 3,5x40mm CHT.	Parafuso 3,5x12mm FLA. Tornillo 3,5x12mm FLA. Screw 3,5x12mm FLA.	Parafuso 3,5x12mm CHT. Tornillo 3,5x12mm CHT. Screw 3,5x12mm CHT.	Parafuso minifix Tornillo minifix Minifix bolt	Parafuso 3,0x16mm CHT. Tornillo 3,0x16mm CHT. Screw 3,0x16mm CHT.
H 108x	I 07x	J 04x	K 25x	L 16x	M 178x	N 56x
Cavilha 8x25mm Cinta 8x25mm Dowel 8x25mm	Tambor minifix Tambor minifix Minifix drum	Porca cilíndrica Tuercas cilíndricas Cylindrical nut	Cantoneira plástica Cantoneira plástica Plastic angle brackets	Parafuso 3,0x30mm CHT. Tornillo 3,0x30mm CHT. Screw 3,0x30mm CHT.	Prego 10x10mm Clavo 10x10mm Nail 10x10mm	Fixador de fundos Fijador de fondos Bottom fixer
O 08x	P 18x	Q 04x	R 01x	S 01x	T 04x	U 02x
Cantoneira suporte triangular Cantoneira soporte triangular Triangle support angle	Suporte metal Soporte metálico Metal support	Suporte cabideiro Soporte de percha Coat hanger support	Cabideiro Alum. 479mm Alu 479mm percha Alu coat hanger 479mm	Cabideiro Alum. 1027mm Alu 1027mm percha Alu coat hanger 1027mm	Corredora telescópica Corredora telescópica Telescopic slide	Perfil Puxador 2104mm Tirador 2104mm Handle 2104mm
V 02x	W 01x	X 01x	Y 01x	Z 03x	AA 10x	AB 02x
Perfil Anti-empeno U 2104mm Perfil anti-empeno U 2104mm Anti-warp profile U 2104mm	Trilho Alumínio 2513mm Riel Aluminio 2513mm Aluminum Rail 2513mm	Trilho PVC 2513mm Carril PVC 2513mm PVC Rail 2513mm	Kit Rodízio CM110 (2Portas) Kit de rodillos CM110 (2Puertas) CM110 Pulley Kit (2Doors)	Perfil "I" 1766mm Perfil "I" 1766mm Profile "I" 1766mm	Pé "U" 50x40x100mm Pie "U" 50x40x100mm 50x40x100mm "U" feet	Sachê de cola Bolsa de pegamento Glue bag
AC 38x	AD 12x	AE 03x	AF 01x	AG 08x	AH 02x	AI 08x
Adesivo tapa parafuso 10mm Adhesivo tapón de tornillo 10mm Bolt cover adhesive 10mm	Adesivo tapa parafuso 10mm Adhesivo tapón de tornillo 10mm Bolt cover adhesive 10mm	Adesivo tapa parafuso 17mm Adhesivo tapón de tornillo 17mm Bolt cover adhesive 17mm	Etiqueta resinada Henn Etiqueta resinada Henn Henn resin label	Batente PVC para Porta Parada de PVC para Puerta PVC Door Stop	Giz de correção Tiza de corrección Chalk of correction	Bucha Fixador de Espelho Buje de sujeción del espejo Mirror fixing bush
AJ 08x	Parafuso 3,5x14mm FLA Cromado Tornillo 3,5x14mm FLA Cromado Screw 3,5x14mm FLA Chrome					



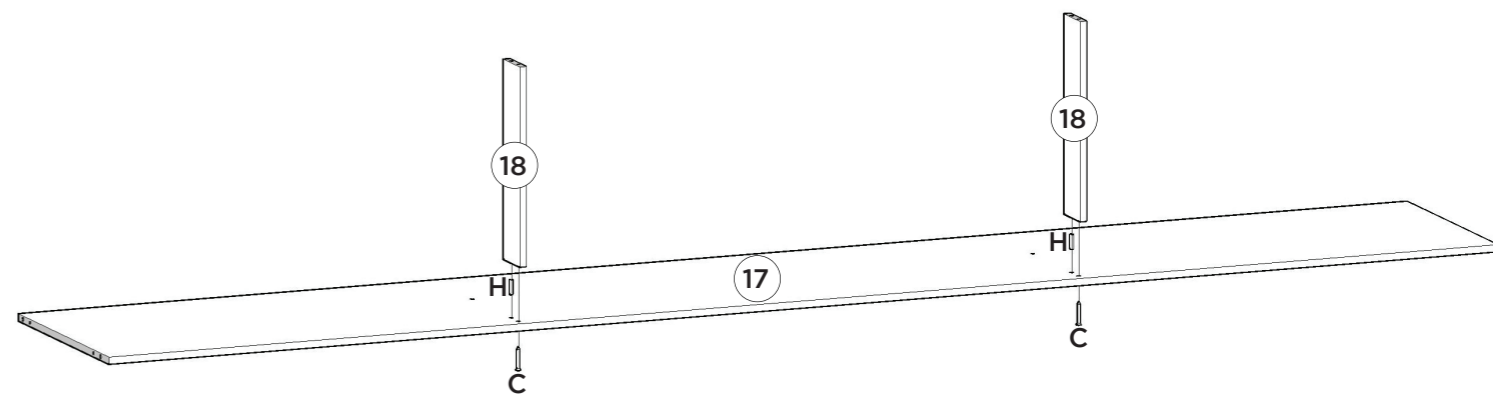
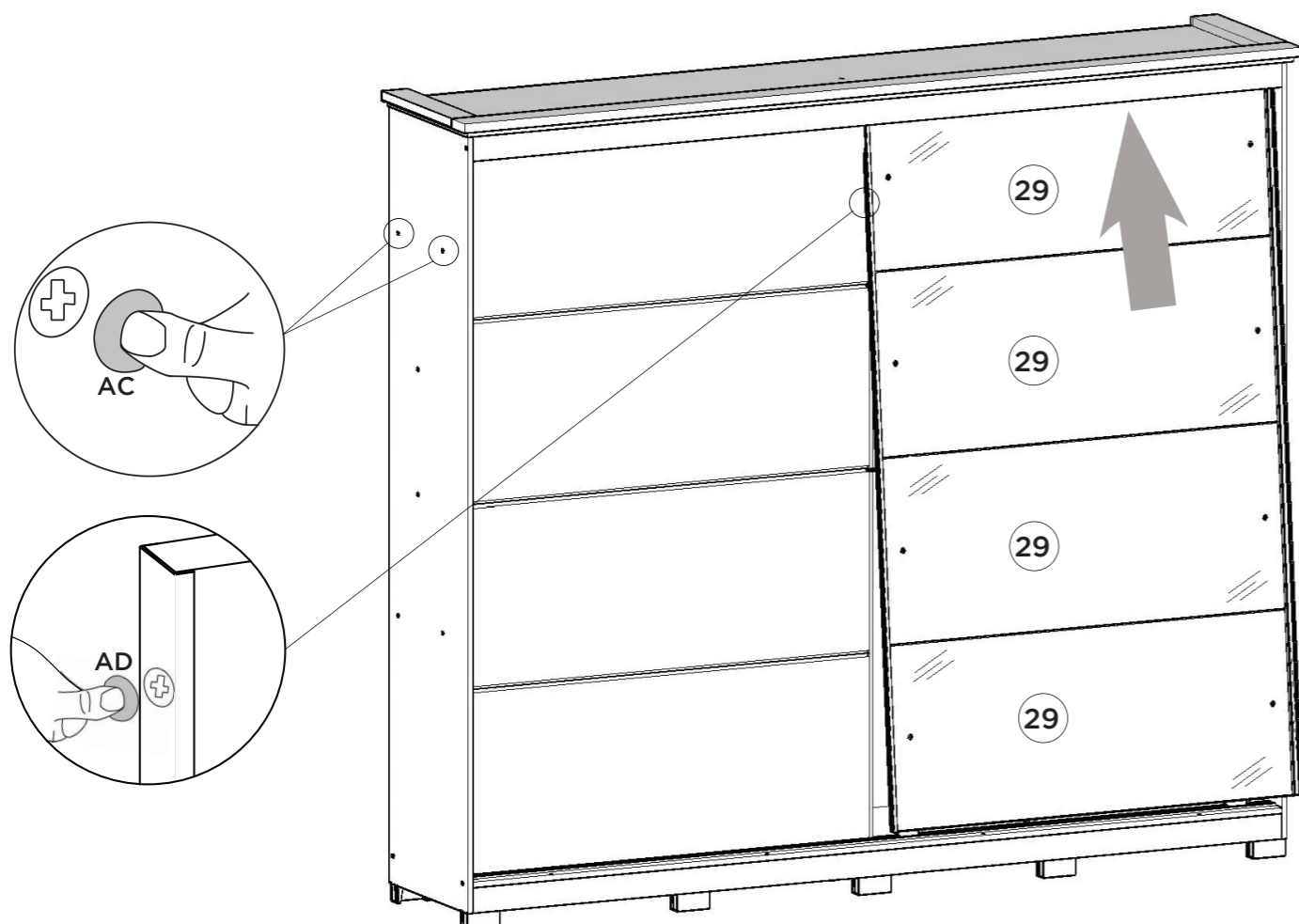
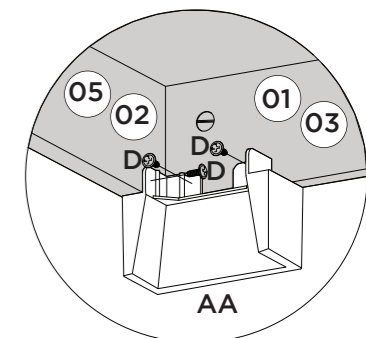
Para a colocação das portas nos trilhos encaixe primeira a porta no trilho de PVC superior (x) e em seguida no trilho de alumínio inferior (W).

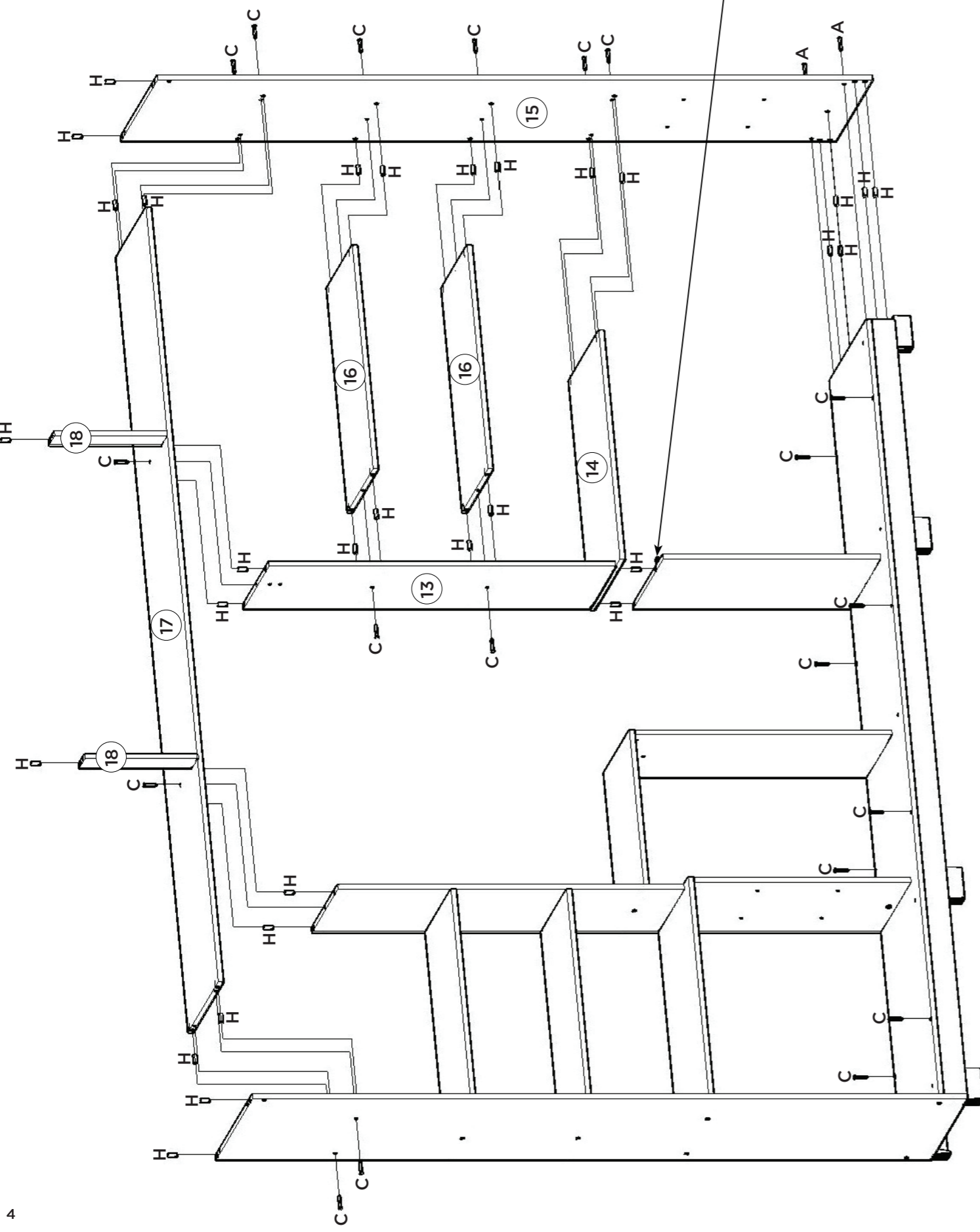
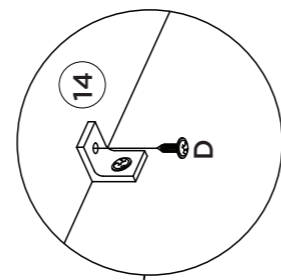
Para la colocación de las puertas en la pista instalación de la puerta en la primera banda superior PVC (x) y luego el riel de aluminio inferior (W).

For placing the doors on the rails fitting the door on the PVC rail first (x) and then on the lower aluminum rail (W).



- Vídeo: Dicas para fixar o Minifix
- Video: Consejos para arreglar Minifix
- Video: Tips for Fixing Minifix



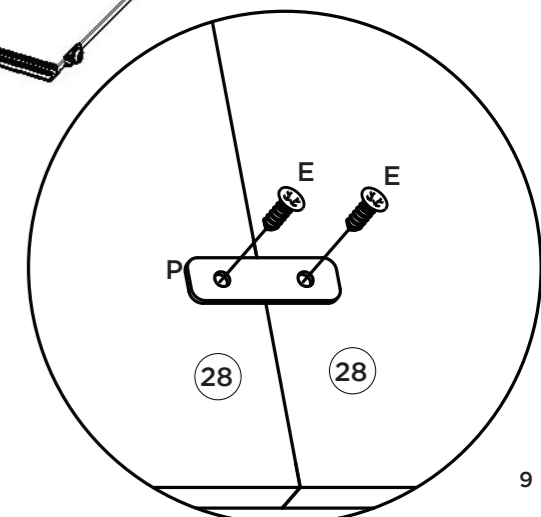
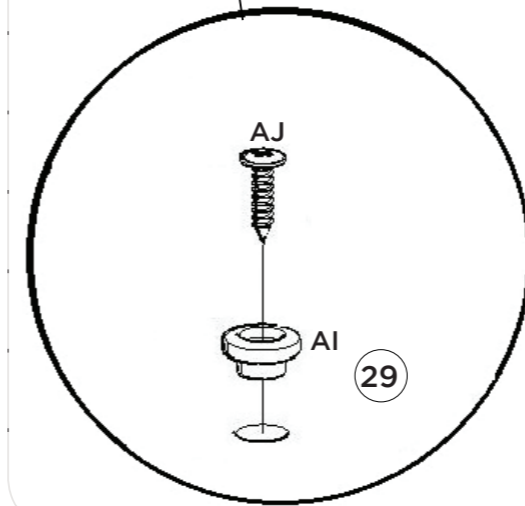
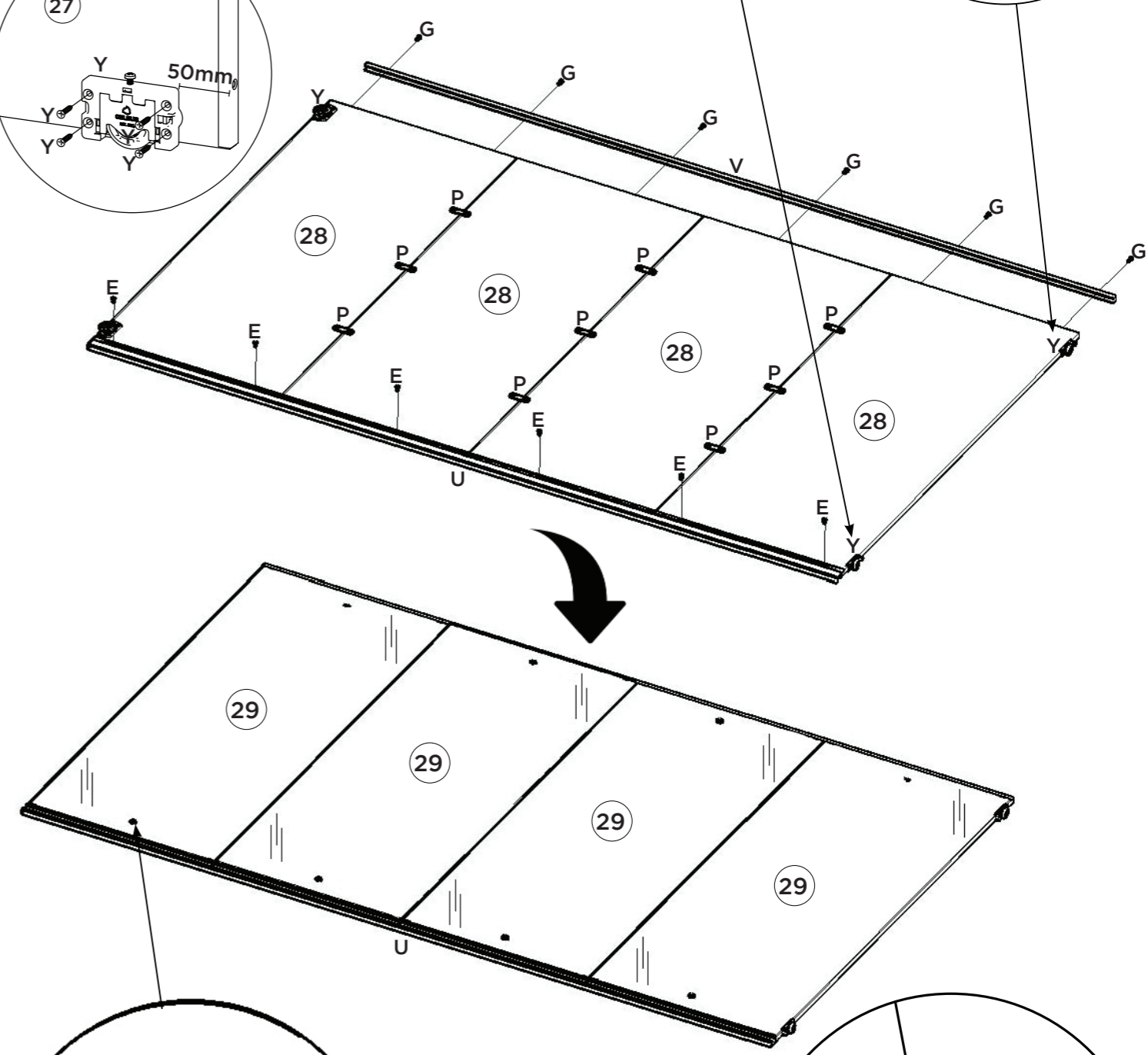
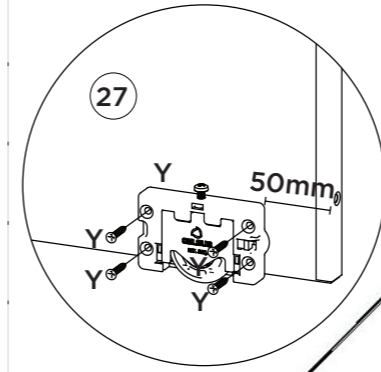
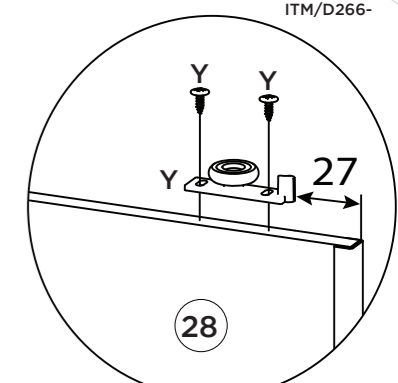
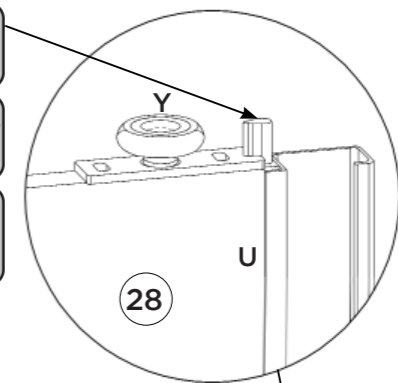


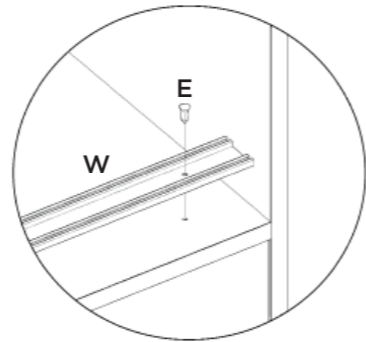
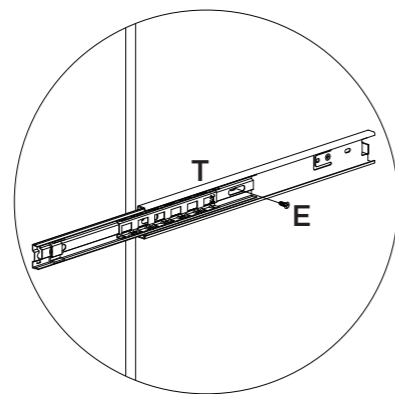
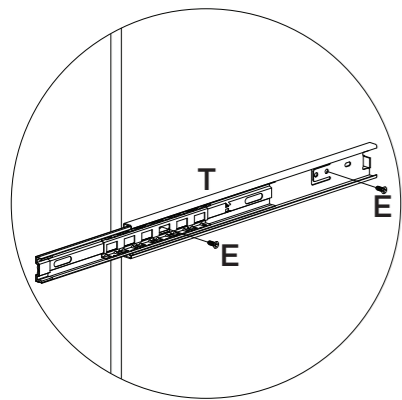
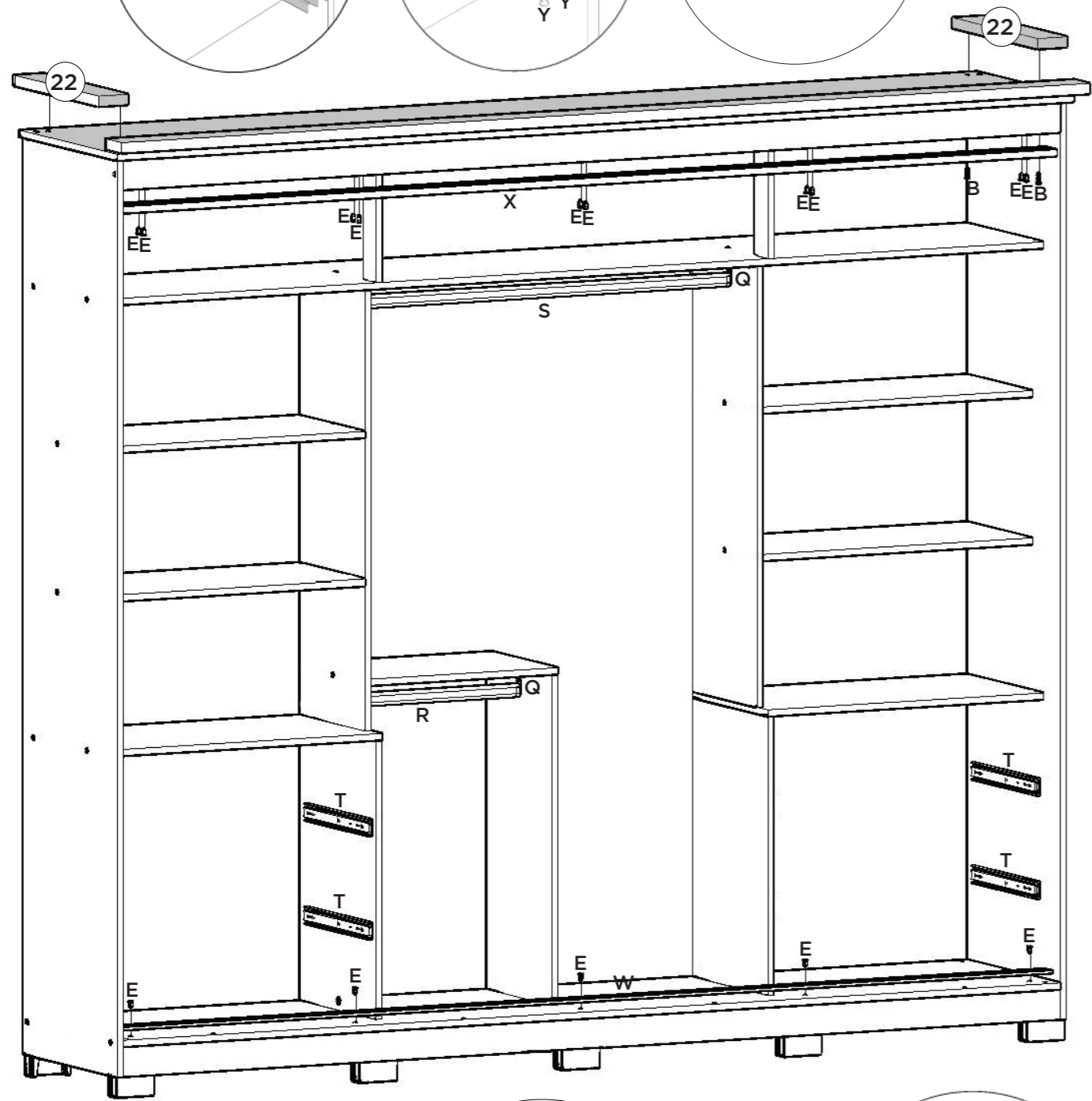
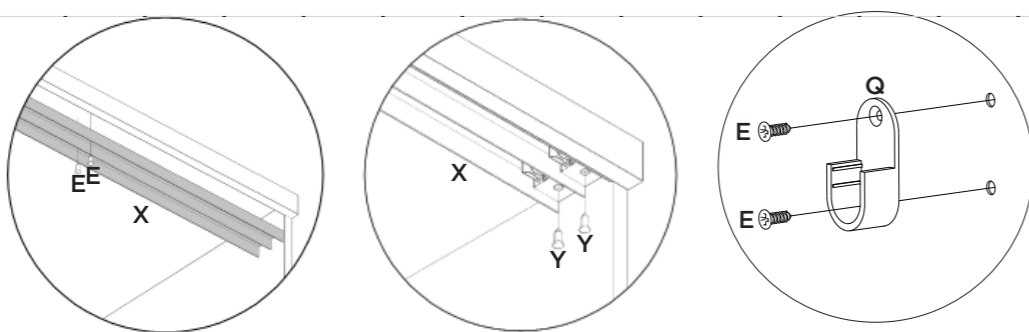
12

Guia (Y) deve ficar alinhado com a Porta, no lado em que for instalado o Perfil Puxador (U)

Guía (Y) debe ser alineado con la puerta, en el lado donde está instalado el perfil de la manija (U)

Guide (Y) should be aligned with the Door, on the side where the Handle Profile (U) is installed





- Video: Dicas para fixar a Corrediça
- Video: Consejos para arreglar la diapositiva
- Video: Tips for Fixing the Slide

