

FERRAGENS | HERRAJES | HARDWARE

A 08x Parafuso 4,5x50mm CHT. Tornillo 4,5x50mm CHT. Screw 4,5x50mm CHT.	B 06x Parafuso 4,0x22mm FLA MET. Tornillo 4,0x22mm FLAMET. Screw 4,0x22mm FLAMET.	C 25x Parafuso 3,5x40mm CHT. Tornillo 3,5x40mm CHT. Screw 3,5x40mm CHT.	D 24x Parafuso 3,5x25mm FLA. Tornillo 3,5x25mm FLA. Screw 3,5x25mm FLA.	E 138x Parafuso 3,5x12mm FLA. Tornillo 3,5x12mm FLA. Screw 3,5x12mm FLA.
F 42x Parafuso 3,5x12mm CHT. Tornillo 3,5x12mm CHT. Screw 3,5x12mm CHT.	G 32x Parafuso 3,0x16mm CHT. Tornillo 3,0x16mm CHT. Screw 3,0x16mm CHT.	H 32x Fixador de fundos Fijador de fondos Bottom fixer	I 08x Prego 12x12mm Anelado Clavo 12x12mm Anillado Ringed Nails 12x12mm	J 120x Prego 10x10mm Clavo 10x10mm Nail 10x10mm
K 86x Cavilha 5x25mm Cinta 5x25mm Dowel 5x25mm	L 06x Calço metal 12mm Calzado metálico 12mm 12mm metal shim	M 18x Calço metal 5mm Calzado metálico 2mm 5mm metal shim	N 24x Dobradiça metal 26 mm Bisagra de metal 26 mm 26 mm metal hinge	O 18x Cantoneira plástica Cantonera plástica Plastic angle brackets
P 01x Etiqueta resinada Briz Etiqueta resinada Briz Briz resin label	Q 12x Puxador Indonésia 128mm Tirador Indonésia 128mm 128mm Indonésia Handle	R 08x Suporte cabideiro Soporte de percha Coat hanger support	S 04x Cabideiro Madeira 519mm Cabezal Madera 519mm 519mm wooden hanger	T 04x Corrediça metal 350mm Corredera metal 350mm Sliding metal 350mm
U 10x Pé "U" 50x40x100mm Pie "U" 50x40x100mm 50x40x100mm "U" feet	V 06x Porca sextavada Tuerca hexagonal Hexagon nuts	W 16x Porca cilíndrica Tuerca cilíndrica Cylindrical nut	X 01x Perfil "I" 1620mm Perfil "I" 1620mm Profile "I" 1620mm	Y 02x Batente 15x25mm Parada 15x25mm 15x25mm stop
Z 01x Suporte de metal Soporte de metal Metal stands	AA 02x Sachê de cola Bolsa de pegamento Glue bag	AB 28x Adesivo tapa parafuso 10mm Adhesivo tapón de tornillo 10mm Bolt cover adhesive 10mm	AC 08x Parafuso 3,0x20mm CHT. Tornillo 3,0x20mm CHT. Screw 3,0x20mm CHT.	

Item	Caixa Caja Box	Qtd Ctd Qty	Descrição Descripción Description	Medidas (mm) Dimensions (mm) Size (measurements) (mm)
01=15	1/3	01	Rodapé frontal Rodapié frontal Front footboards	525x120x12
02=16	1/3	01	Rodapé traseiro Rodapié trasero Rear footboard	525x120x12
03	2/3	01	Lateral esquerda Lateral izquierda Left side	2100x445x12
04=17	1/3	01	Base Base Base	525x445x12
05=18	1/3	01	Prateleira Lateral Estante Lateral side shelf	525x350x12
06	1/3	01	Divisão esquerda División izquierda Left division	2012x445x12
07	1/3	01	Rodapé Frontal Maior Pie de página frontal más grande Larger Front Footer	1080x120x12
08	1/3	01	Travessa Rodapé Rodapié Bandeja Footboard Platter	365x120x12
09	1/3	01	Rodapé traseiro Maior Rodapié trasero Más Grande Larger rear footer	1080x120x12
10	1/3	01	Divisão das Gavetas División de cajones Division of Drawers	308x395x12
11	1/3	01	Tampo das gavetas Tapa del cajón Drawer top	1080x395x12
12	1/3	01	Pilastra da Porta Pilastra de puerta Door Pilaster	1572x95x12
13	2/3	02	Prateleira Estante shelf	1080x300x12
14	1/3	01	Divisão direita División derecha Right division	2012x445x12
15=01	1/3	01	Rodapé frontal Rodapié frontal Front footboards	525x120x12
16=02	2/3	01	Base Tampo Base Tapa Base Cover	350x73x12
17=04	1/3	03	Base Base Base	525x445x12
18=05	2/3	01	Lateral esquerda Lateral izquierda Left side	525x350x12
19	2/3	01	Tampo Tapa Top	2154x445x12
20	2/3	01	Lateral direita Lateral derecha Right side	2100x445x12
21	3/3	04	Fundo Fondo Raw	1904x541x3
22	2/3	01	Chapéu Sombrero Hat	2172x80x15
23	1/3	04	Ripa Lateral Tablilla lateral Side Clapboard	308x54x9
24	3/3	04	Porta Central Puerta central Central Door	1573x265x15
25	3/3	04	Porta Puerta Door	1888x145x12
26	3/3	04	Frente de Gaveta Frente del Cajón Drawer Front	533x152x15
27	1/3	08	Lado de gaveta Lado del cajón Drawer side	350x100x12
28	1/3	04	Ripa de trás Listón trasero Rear batten	500x100x12
29	2/3	04	Fundo de Gaveta Fondo de cajón Drawer Background	499x367x3

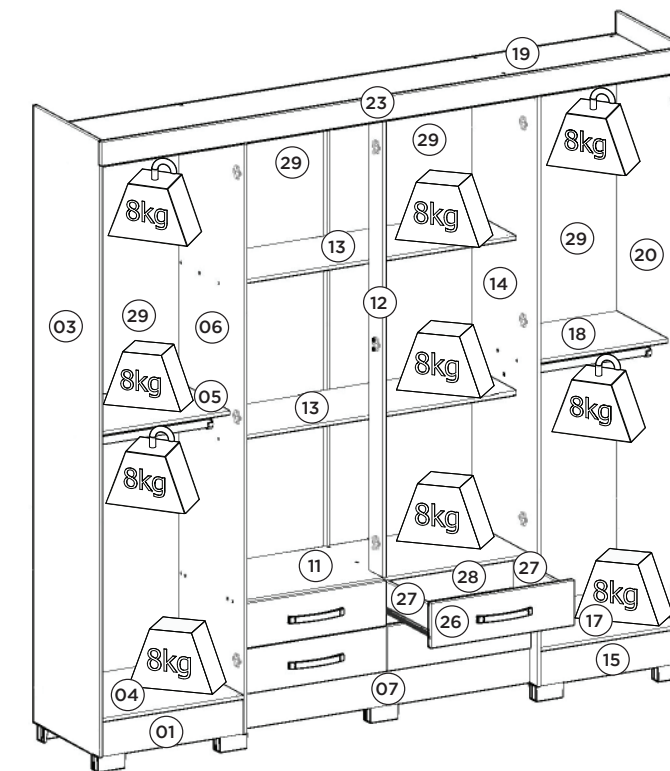
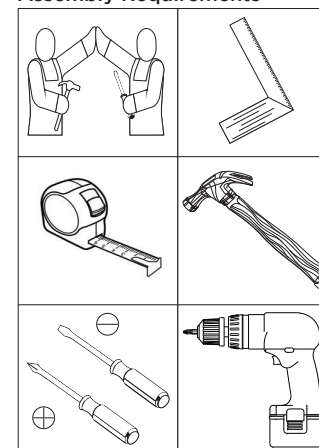
Ind. e Com. de Móveis Henn
Mondai - SC - Brasil

+55 49 3674.3500

@moveishenn
www.henn.com.brINSTRUÇÕES DE
MONTAGEMINSTRUCCIONES DE MONTAJE
ASSEMBLY INSTRUCTIONS

Roupeiro 08 Portas / Armario de 08 Puertas / 08 Door Wardrobe

- B53-127 Nature/Off White
- B53-130 Castanho HP

Requisitos para montagem
Requisitor para la montaje
Assembly RequirementsImagens meramente ilustrativas
Imágenes meramente ilustrativas
Images for illustration onlyPesos máximos recomendados com carga distribuída
Peso máximo recomendado con la carga distribuida
Recommended maximum weights with evenly distributed.

AVISO
Para limpeza de seu móvel, use uma flanela seca ou umedecida, e não utilize produtos químicos que possam danificar seu produto.

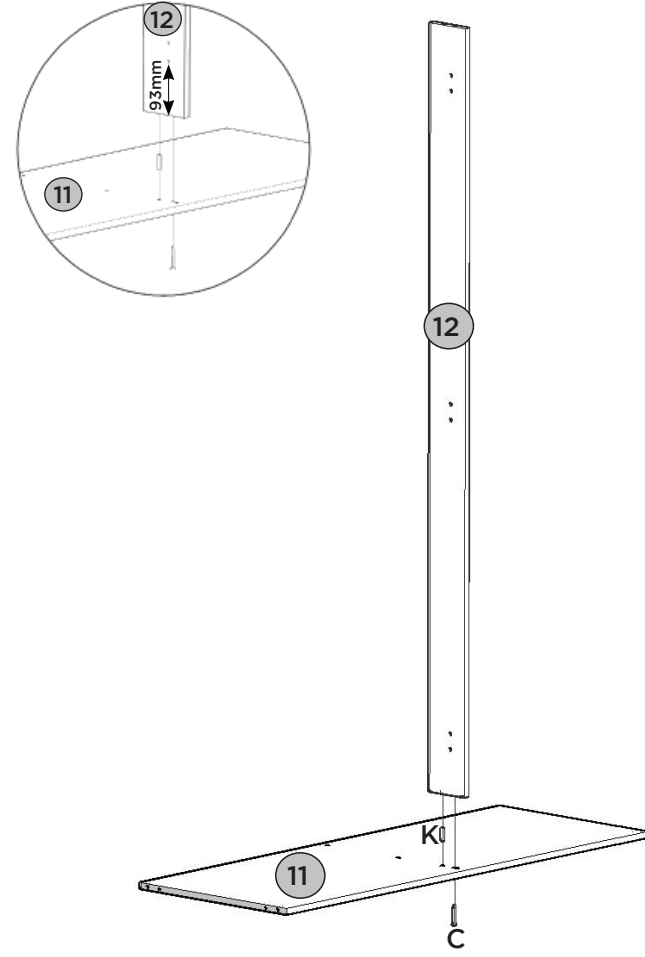
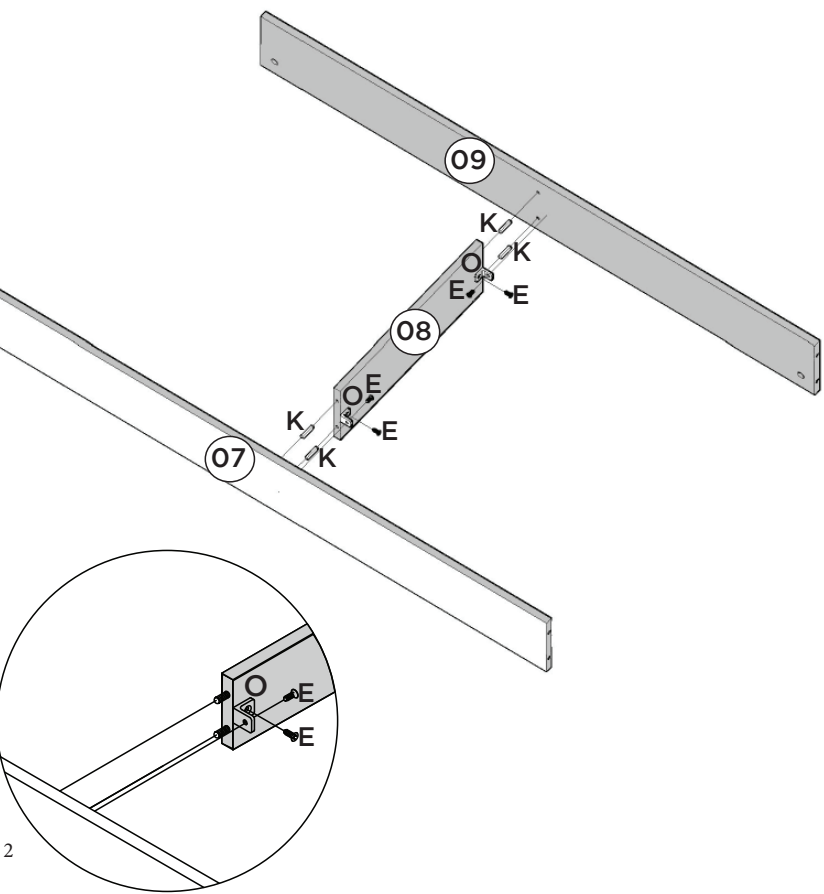
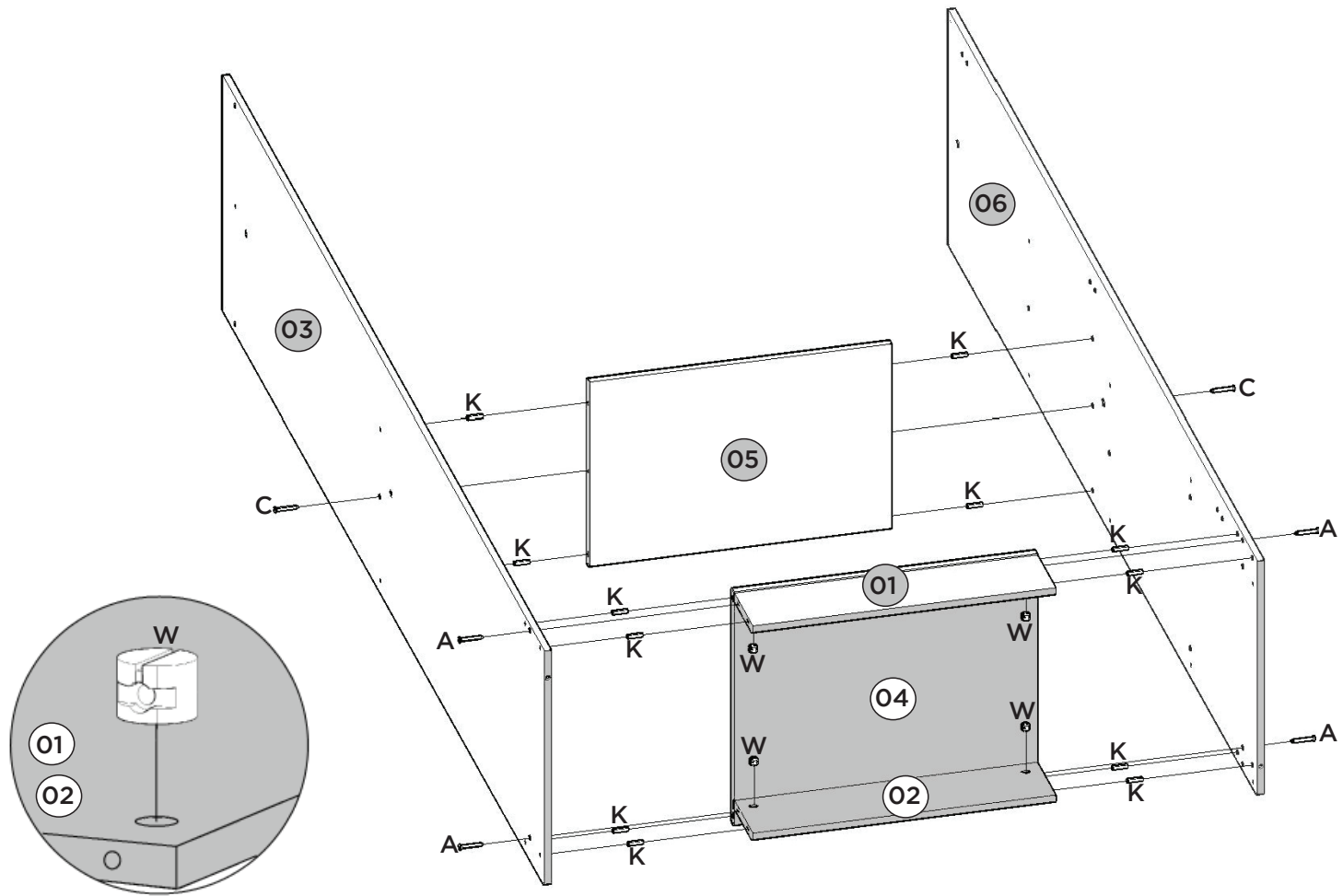
SISTEMA DE MONTAGEM
O sistema de montagem dos produtos, funciona de acordo com a ordem crescente dos números indicados no desenho. Ex: 01, 02, 03, 04... até a conclusão da montagem.

ADVERTENCIA
Para limpieza de su móvil, use una flanela seca o húmeda, y no utilice productos químicos que puedan dañar su producto.

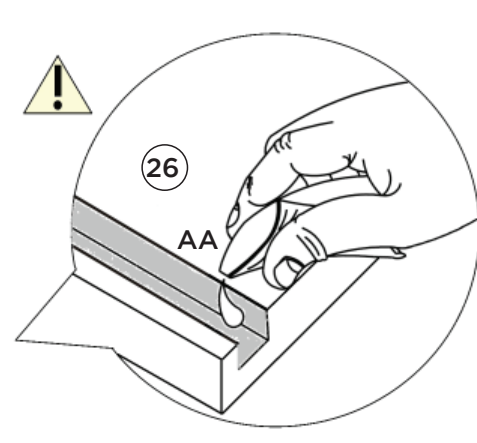
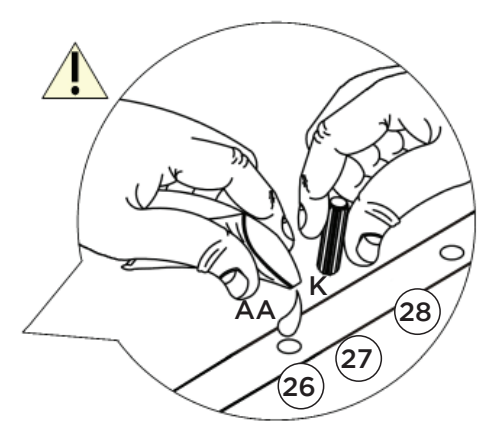
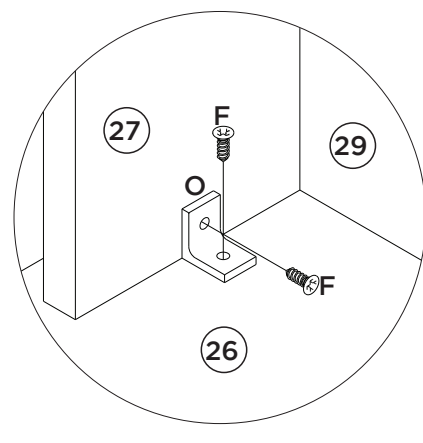
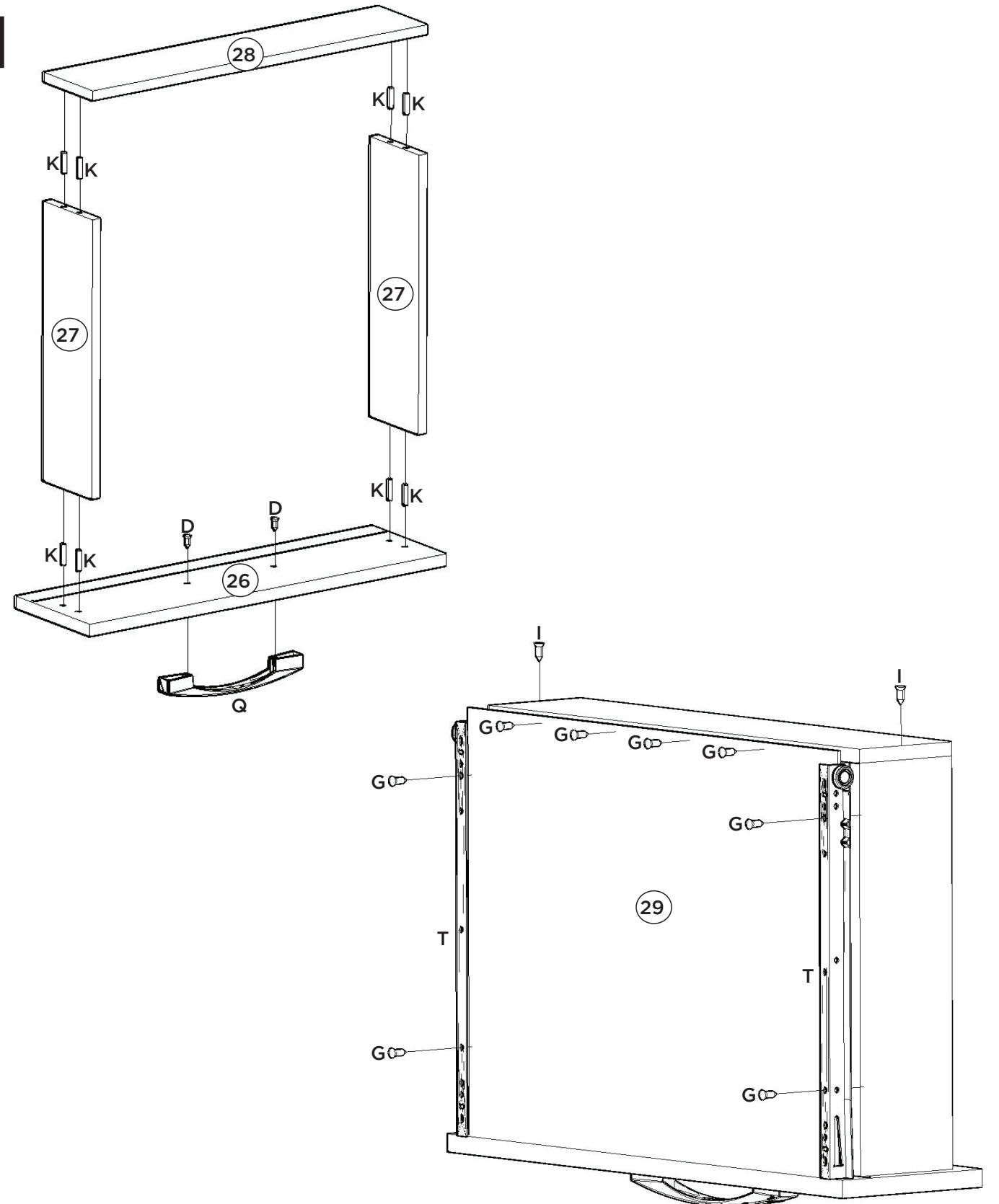
SISTEMA DE MONTAJE
El sistema de montaje de los productos funciona de acuerdo con el orden creciente de los números indicados en el dibujo. Ej.: 01, 02, 03, 04... hasta la conclusión del montaje.

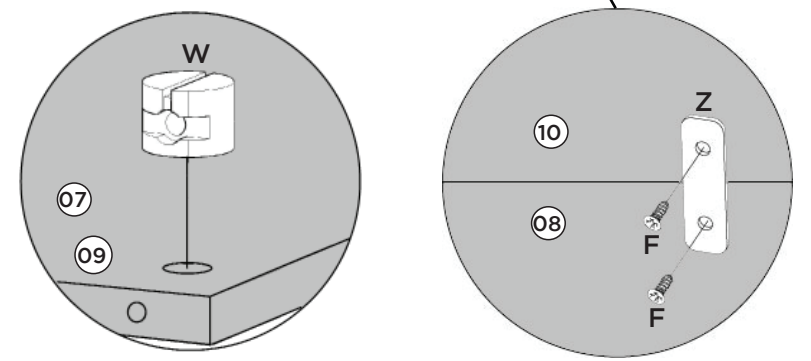
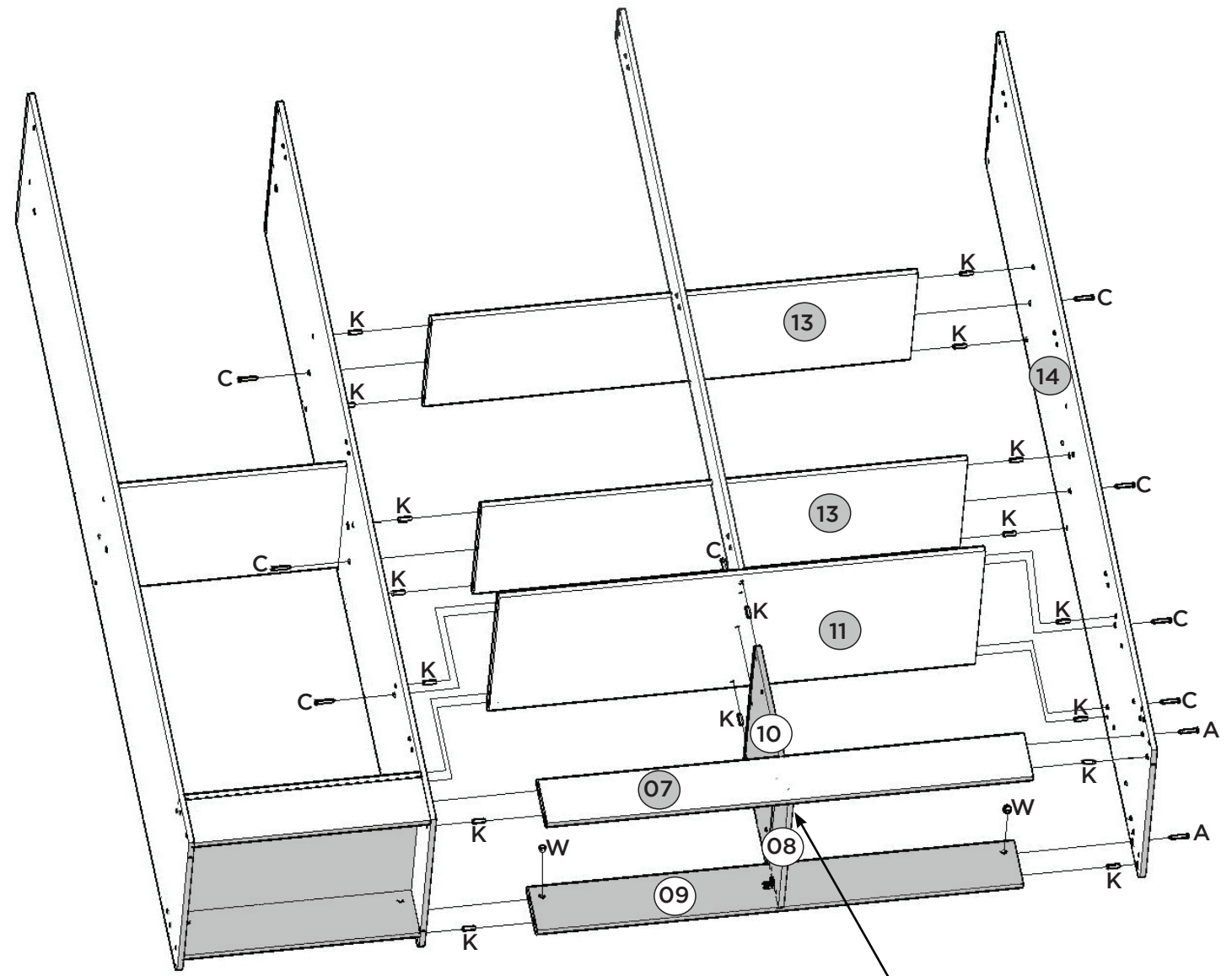
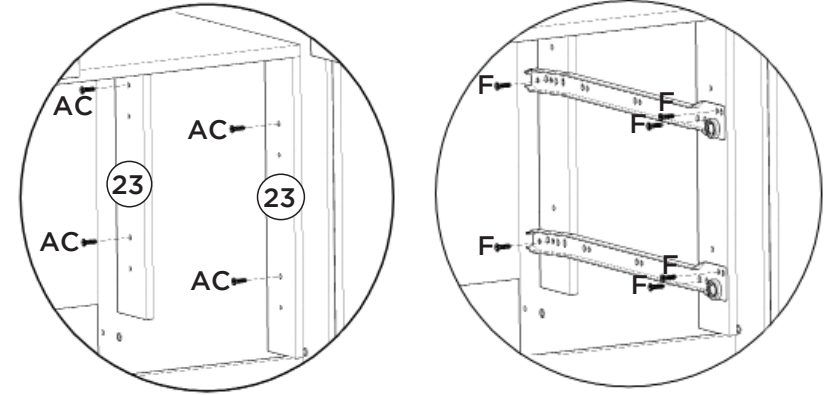
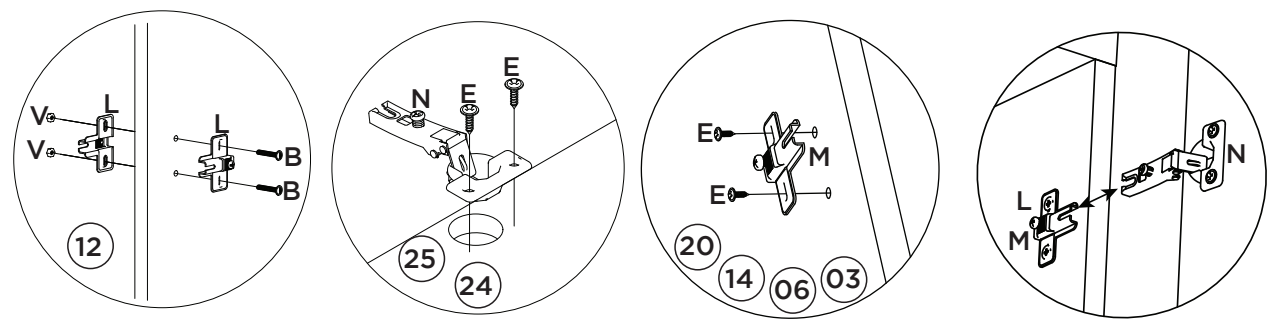
NOTICE
To clean your furniture, use a dry or wet cloth, and do not use chemicals that may damage your product.

ASSEMBLY SYSTEM
The products' assembly system works according to the increasing order of the indicated numbers. For example: 01, 02, 03, 04 ... to the end of the assembly.

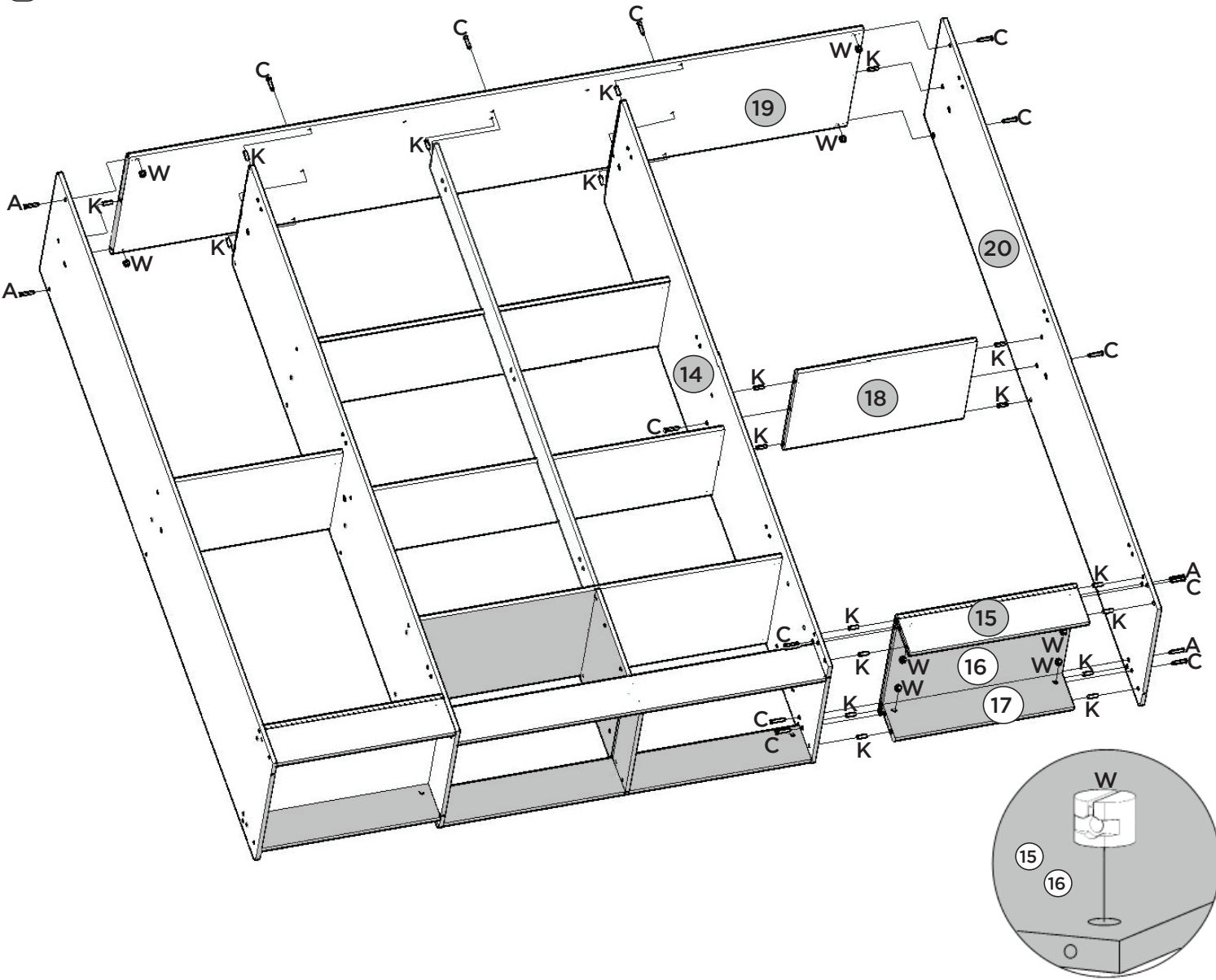


4x

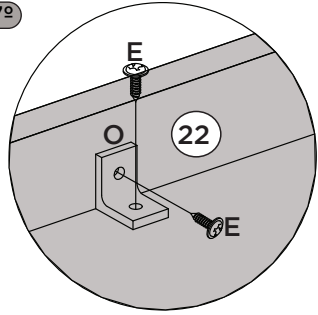




5º



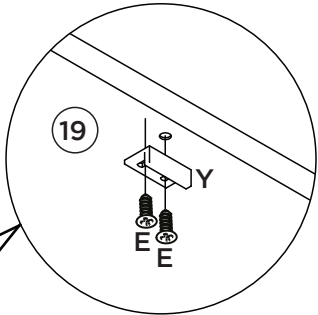
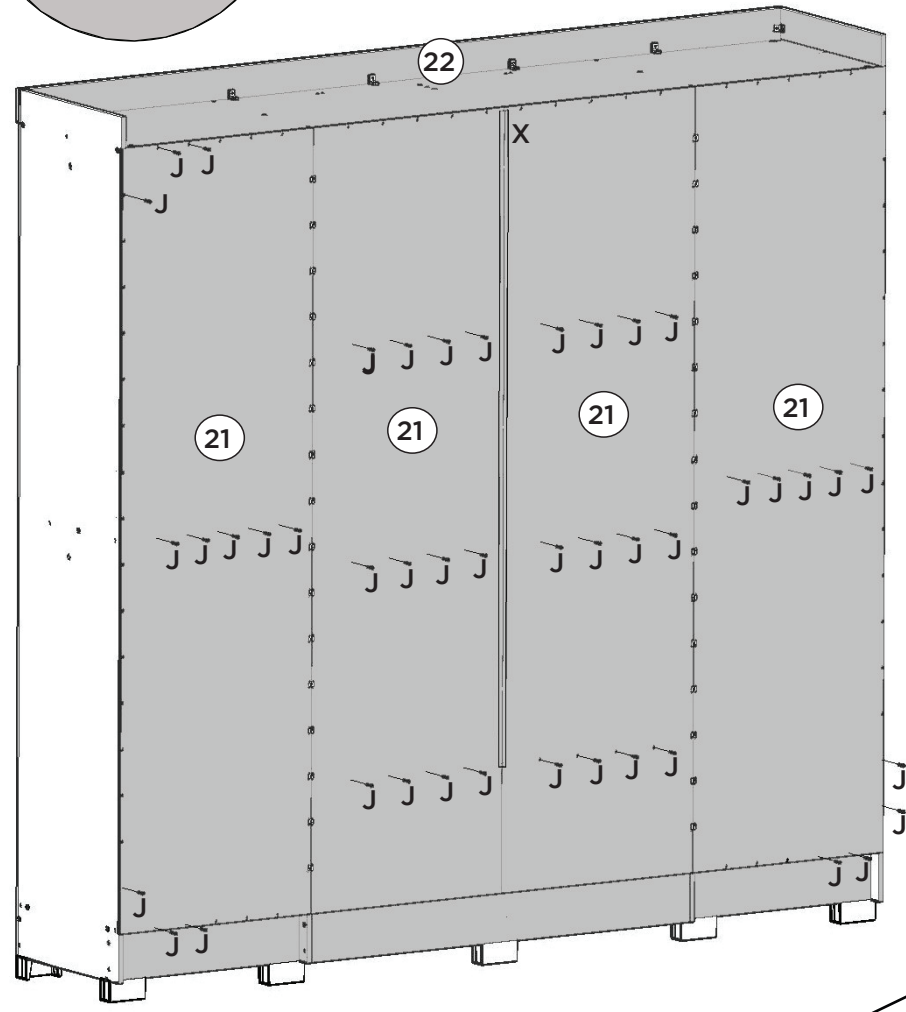
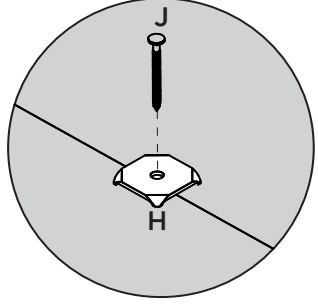
7º



Fixar os pregos a uma distância de 120mm de um para outro.

Fijar las uñas a un distancia de 120 mm uno a otro.

Fix the nails at a distance of 120mm from one to the other



6º

