

CROSS

roupeiro | ropero | wardrobe

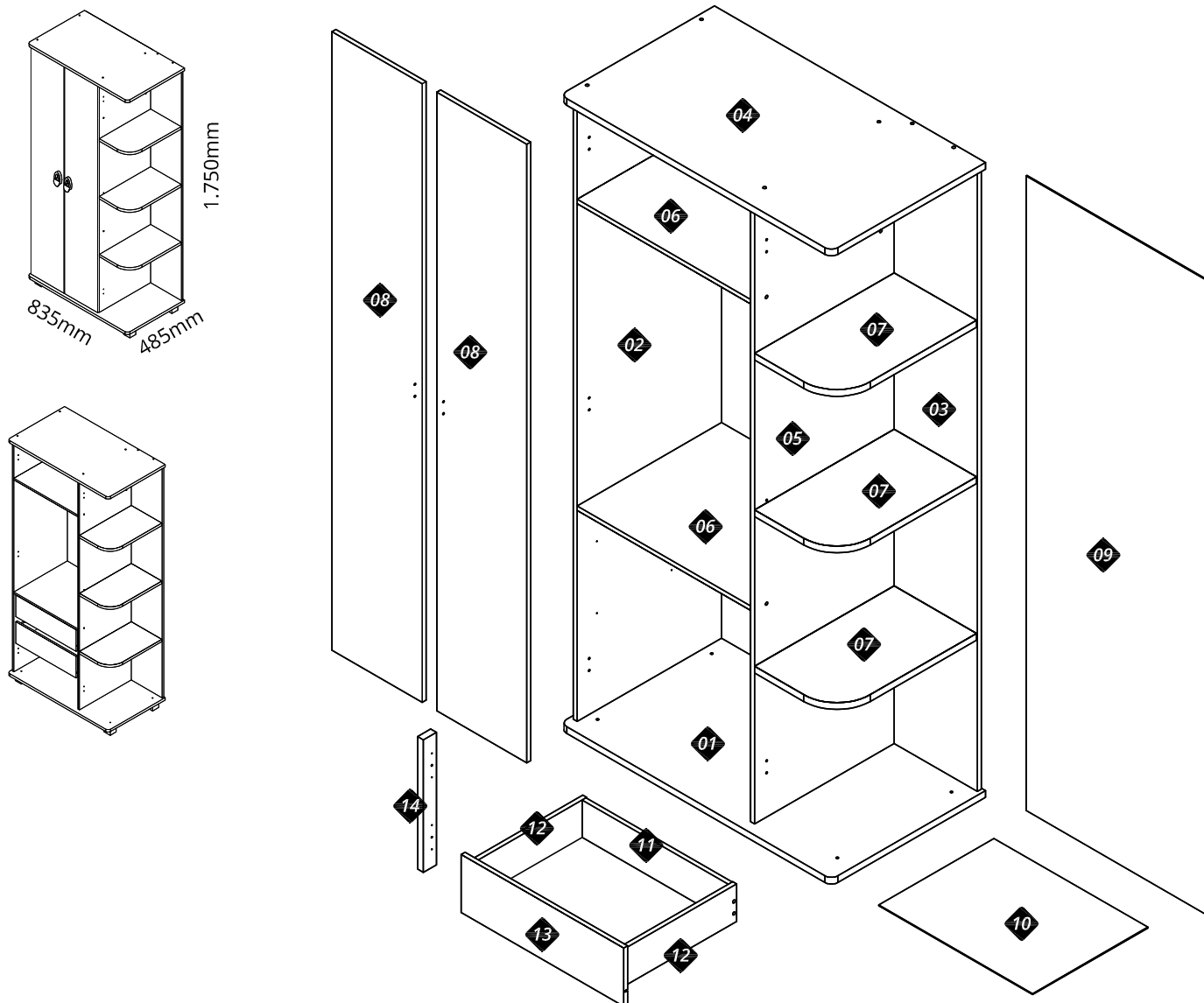
Manual de montagem | Manual de montaje | Assembly instructions

Atenção
Atención
Attention

Este produto deve ser montado por um profissional.

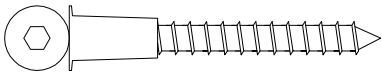
Este producto debe ser ensamblado por un profesional.

This product must be assembled by a professional.

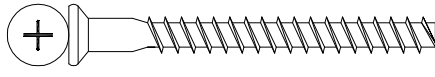


Nº	Cód.	Peças	Piezas	Parts	Medida / Size	Qtd.	Vol.
01	06403	Base	Base	Base	835x474x18	01	01
02	06394	Lateral esquerda	Lateral izquierda	Left side panel	1660x445x12	01	01
03	06396	Painel lateral	Panel lateral	Lateral panel	1660x257x12	01	01
04	06402	Tampo	Cubierta	Top	835x474x18	01	01
05	06395	Lateral direita	Lateral derecha	Right side panel	1660x445x12	01	01
06	06397	Prateleira fixa	Estante	Shelf	535x445x12	02	01
07	06405	Prateleira lateral	Estante lateral	Lateral shelf	415x232x18	03	01
08	06401	Portas	Puertas	Doors	1652x278x12	02	01
09	06406	Fundo do roupeiro	Fondo del ropero	Wardrobe rear	1695x561x2,5	01	01
10	06407	Fundo de gaveta	Fondo del cajone	Bottom of the drawer	474x355x2,5	02	01
11	06400	Contra fundo de gaveta	Trasero del cajone	Rear panel of the drawer	450x100x12	02	01
12	06399	Lateral de gaveta	Lateral de cajone	Side panel of the drawer	350x100x12	04	01
13	06398	Frente de gaveta	Frente del cajone	Front of drawer	501x155x12	02	01
14	06404	Distanciador de corrediça	Calzo del correderas	slides crossbar	354x40x18	04	01

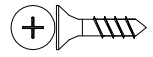
Accesórios e ferragens | Herrajes | Hardware



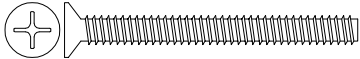
A - cód. 30008477 034 un.



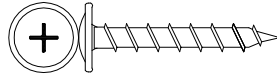
B - cód. 30010784 006 un.



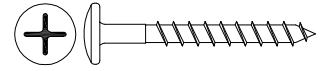
C - cód. 30000711 075 un.



D - cód. 30014008 012 un.



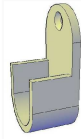
E - cód. 30000843 004 un.



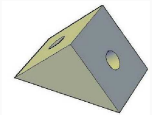
F - cód. 30003569 008 un.



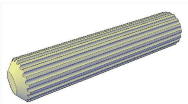
G - cód. 30014656 003 un.



H - cód. 30001188 002 un.



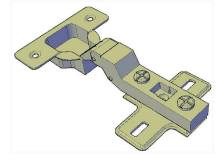
I - cód. 30009931 004 un.



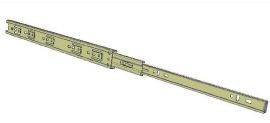
J - cód. 30000770 008 un.



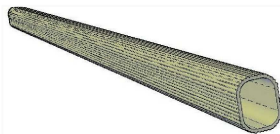
K - cód. 30015568 002 un.



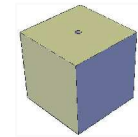
L - cód. 30010712 006 un.



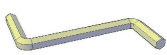
M - cód. 30012237 002 un.



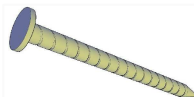
N - cód. 30015487 001 un.



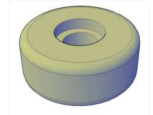
O - cód. * 005 un.



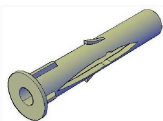
P - cód. 30001224 001 un.



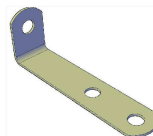
Q - cód. 30000782 035 un.



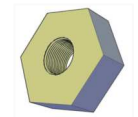
R - cód. 30000853 005 un.



S - cód. 30011974 001 un.

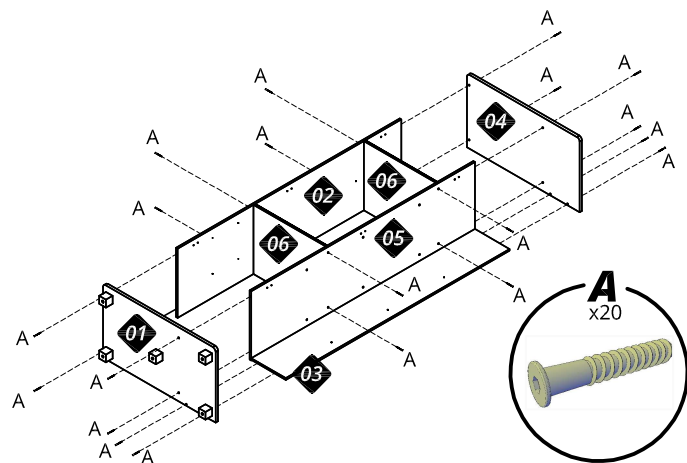
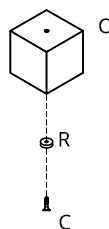
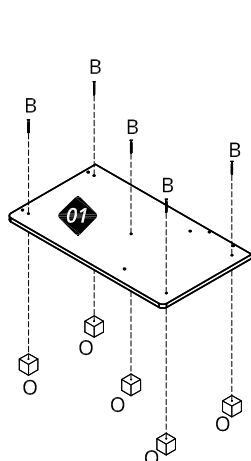
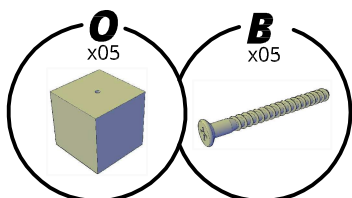
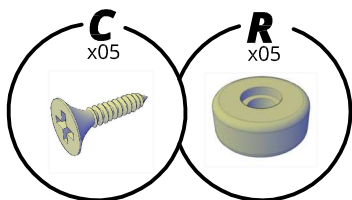


T - cód. 30012846 001 un.



U - cód. 30014009 012 un.

01

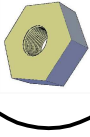


02

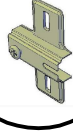
D
x12



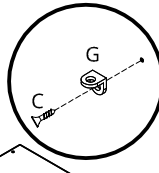
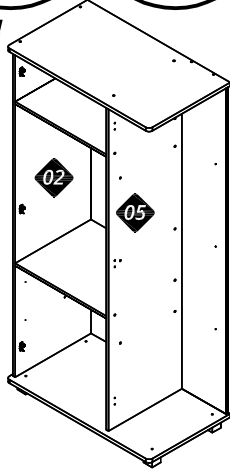
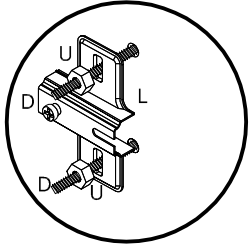
U
x12



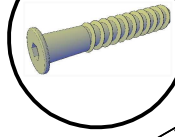
L
x06



É recomendado utilizar um alicate!
Se recomienda usar alicates!
Recommended to use pliers!



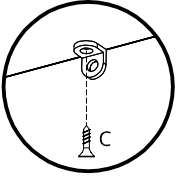
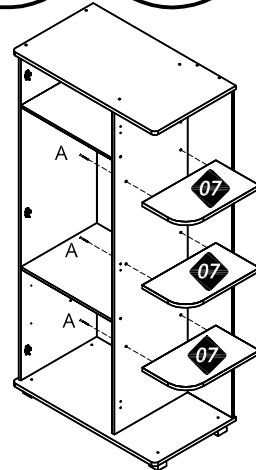
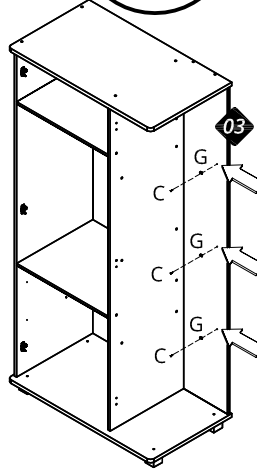
A
x06



G
x03

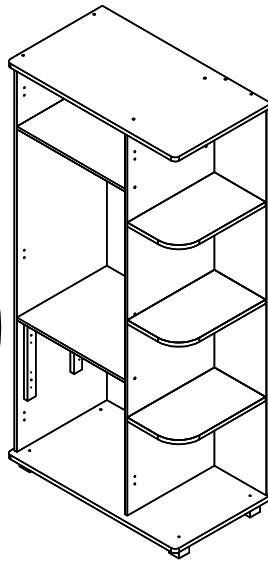
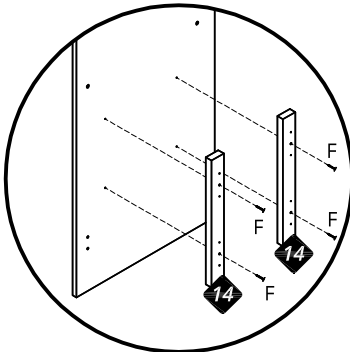
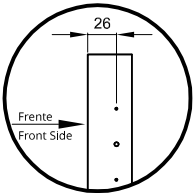
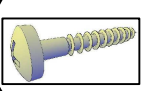


C
x06

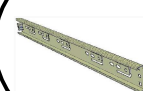


03

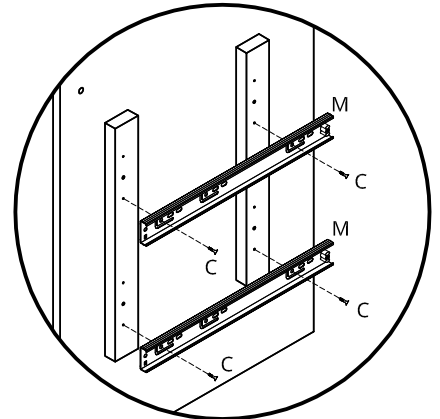
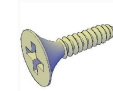
F
x08



M
x04

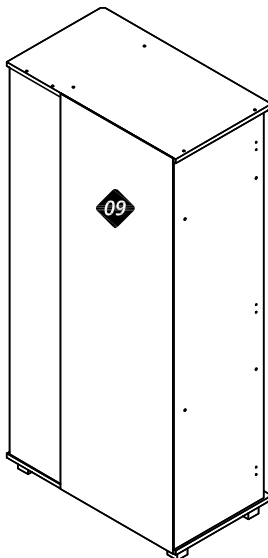
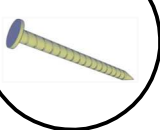


C
x08

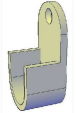


04

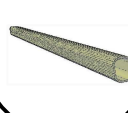
Q
x35



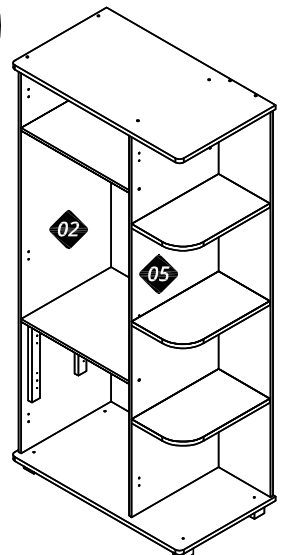
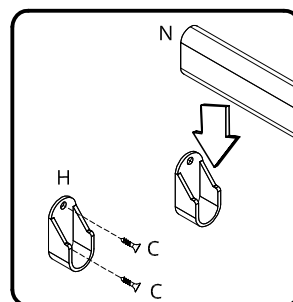
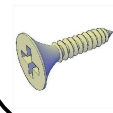
H
x02



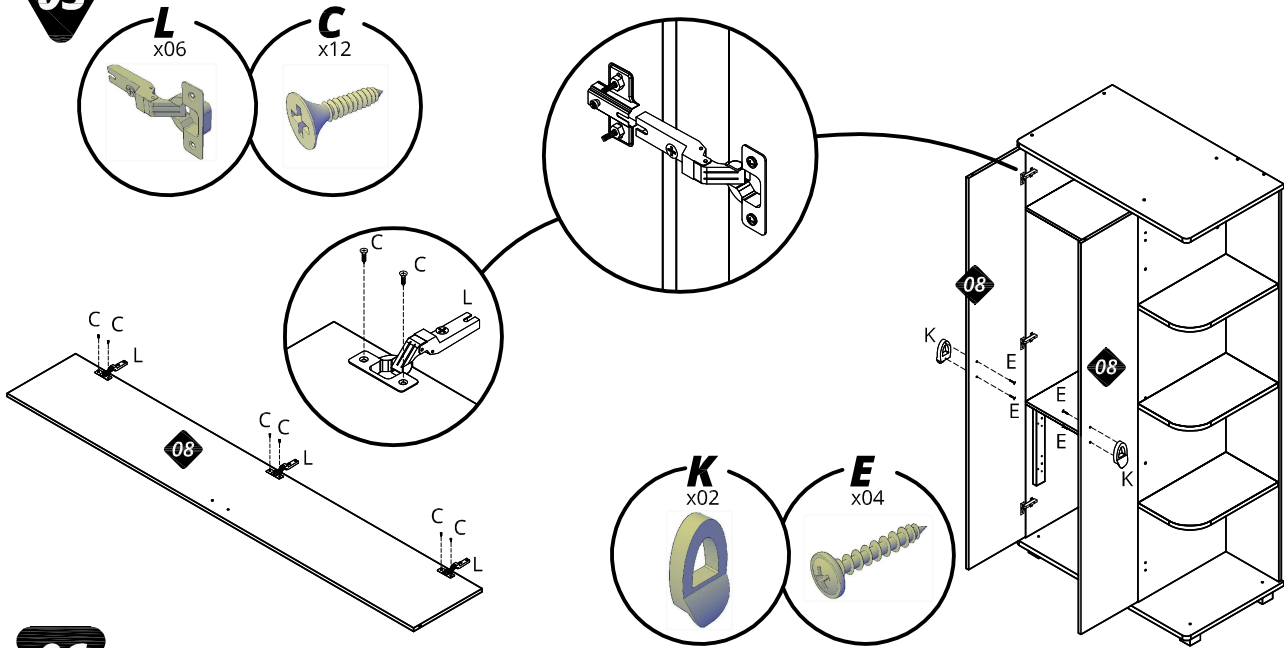
N
x01



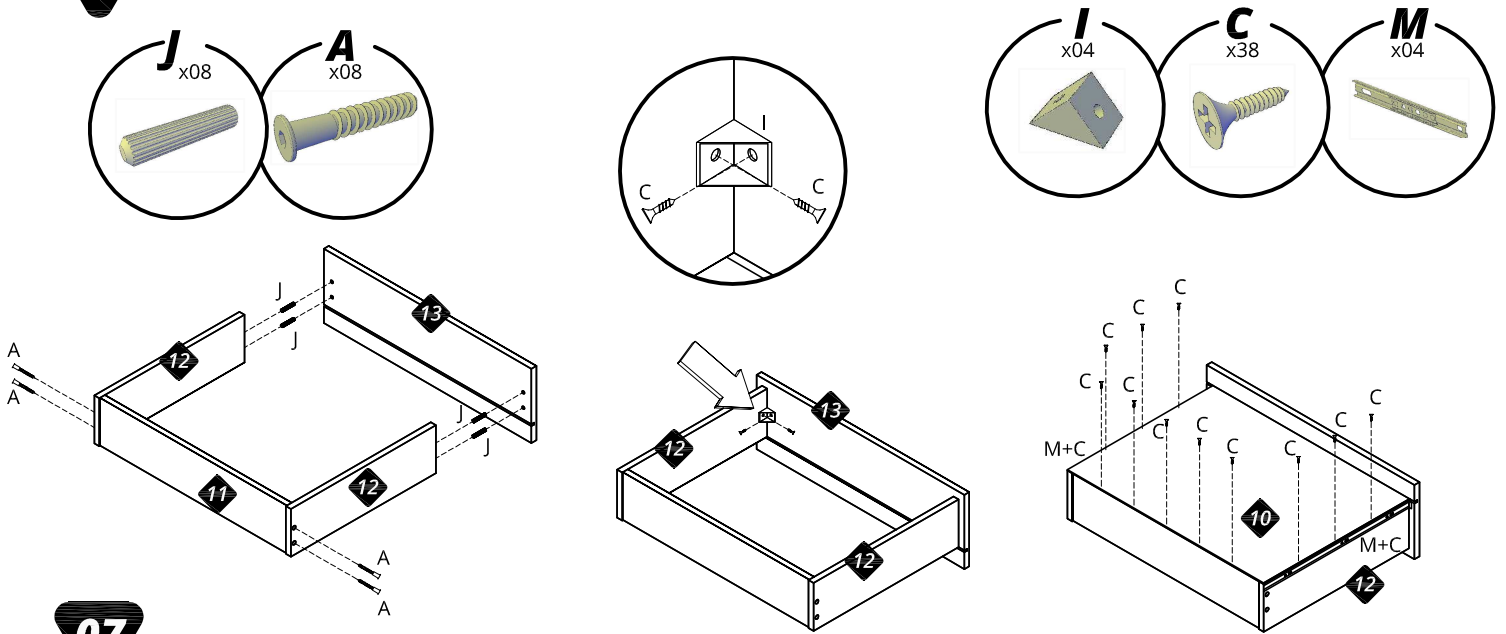
C
x04



05



06



07

SISTEMA ANTI QUEDA SISTEMA ANTI CAÍDA TIP OVER SYSTEM

***Atenção: uso obrigatório**

***Atención: uso requerido**

***Attention: required use**

Utilizando uma furadeira e broca Ø8mm instale a bucha (S) na parede de modo a utilizar o acessório (T) sobre o tampo (04).

Usando un taladro Ø8mm instale el ancla de pared (S) para usar el accesorio en el panel superior (04) del armario.

Using a driller and a bit Ø8mm install the wall anchor (S) and the accessory (T) on the top (04) of the wardrobe.

